

Investor Presentation

Building Gold Resources in the Historic Klondike Goldfields

Saskatoon Virtual October 2022



KG | TSX Venture Exchange

LBDP | Frankfurt Exchange

KDKGF | US OTCQB Exchange



Forward Looking Statements | Cautionary Disclaimer

- Statements contained in these following slides and accompanying oral presentation contain certain forward-looking statements within the meaning of the United States Private Securities Litigation Reform Act of 1995 and forward looking information within the meaning of the Securities Act (Ontario) and similar legislation in other jurisdictions. Forward-looking statements can be identified by the use of words such as “plans”, “expects” or “does not expect”, “is expected”, “budget”, “scheduled”, “estimates”, “forecasts”, “intends”, “anticipates” or “does not anticipate”, or “believes”, or variation of such words and phrases or state that certain actions, events or results “may”, “could”, “should”, “would”, “might” or “will” be taken, occur or be achieved. Forward-looking statements involve known and unknown risks, uncertainties and other factors which may cause the actual results, performance or achievements of Klondike Gold Corp. (“Klondike Gold”) to be materially different from any future results, performance or achievements expressed or implied by the forward-looking statements. These forward-looking statements include estimates, forecasts, and statements as to management’s expectations with respect to, among other things, business and financial prospects, growth potential, the size, quality and timing Klondike Gold’s exploration and possible development projects, mineral reserves and mineral resources, future trends, plans, strategies, objectives and expectations.
- These forward-looking statements involve numerous assumptions, risks and uncertainties and actual results may vary materially. These statements are based on a number of assumptions, including, but not limited to, assumptions regarding general business and economic conditions, interest rates, the supply and demand for, inventories of, and the level and volatility of prices of gold, silver, zinc, lead, or copper, the availability of financing for Klondike Gold’s programs on reasonable terms, the accuracy of Klondike Gold’s resource estimates (including, with respect to size, grade and recoverability) and the geological, operational and price assumptions on which economic resource models are based, the resolution of environmental permitting and other proceedings, the capacity to obtain qualified personnel, consultants, and contractors and the future operational financial performance of the company generally. The foregoing list of assumptions is not exhaustive.
- Events or circumstances could cause actual results to differ materially. Such events include, among others, unanticipated developments in business and economic conditions in the principal markets for commodities and/or financial instruments, changes in the supply, demand, and prices for metals and other commodities, the actual results of exploration activities, conclusions of economic evaluations, uncertainty in the estimation of ore reserves and mineral resources, changes in project parameters as plans continue to be refined, changes in economic and political stability in jurisdictions where Klondike Gold has business interests, environmental risks and hazards, legal disputes, increased infrastructure and/or operating costs, labour and employment matters, and government regulation as well as those factors discussed in the section entitled “Risk Factors” in Klondike Gold’s Annual and Quarterly Reports and associated financial statements, Management Information Circulars and other disclosure documents filed with Canadian securities regulators. Although Klondike Gold has attempted to identify important factors that could cause actual results to differ materially, there may be other factors that cause results not to be as anticipated, estimated or intended. There can be no assurance that such statements will prove to be accurate as actual results and future events could differ materially from those anticipated in such statements. Klondike Gold disclaims any intention or obligation to update or revise any forward-looking statements, whether as a results of new information, future events or otherwise. Accordingly readers/listeners should not place undue reliance on forward-looking statements.

Company Overview

About Klondike Gold Corp.

- Vancouver-based gold exploration company
- Listed TSXV, FRA, OTCQB
- Operates in Dawson City, Yukon, Canada
- A top mining jurisdiction in the world.
- 152 M shares issued; \$17M market cap ; \$2M cash

Flagship Project

Klondike District Gold Project:

- 586 square kilometer, 100% owned claims
- Covers the 20M oz Klondike goldfields
- Orogenic gold associated with district-scale faults
- Multi-kilometer gold mineralization discovered at Lone Star and Stander Zones.

❑ First-ever bedrock mineral resource planned 2022.

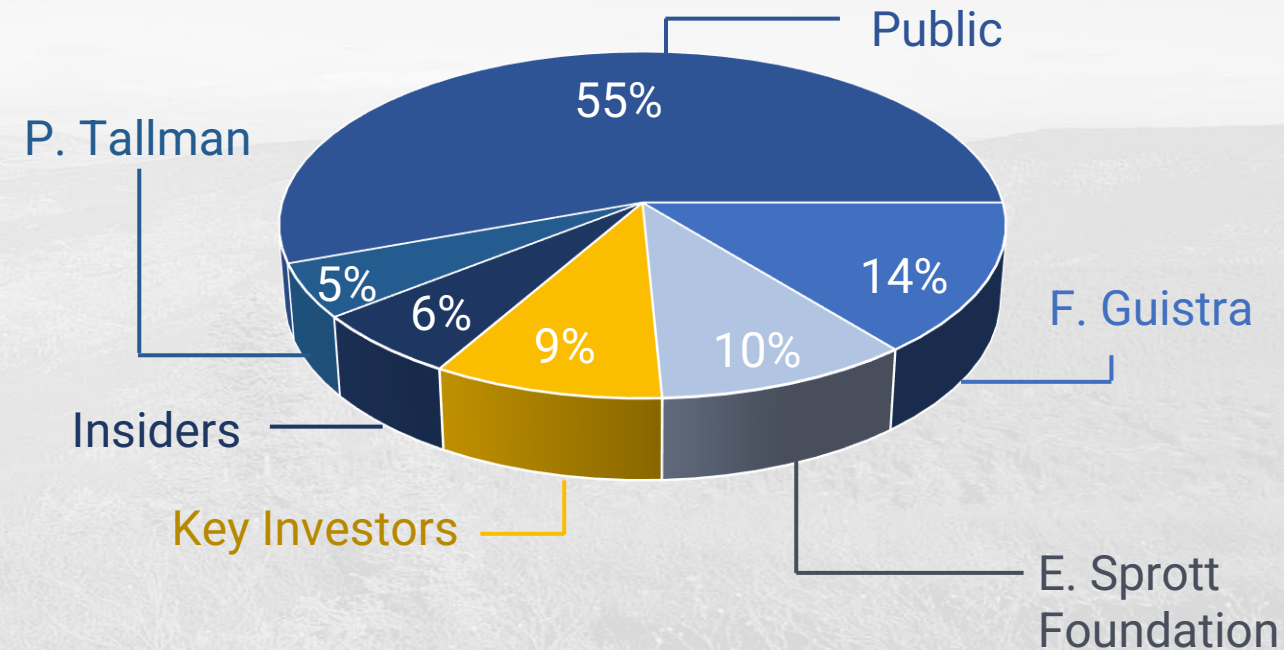


Capital Structure | Positioned for Strong Growth

TSXV	KG
Common Shares Outstanding	152.1M
Stock options (WAP \$0.25)	11.7M
Warrants (WAP \$0.34)	17.6M
Cash	\$1.5M

- **Market Cap: \$17M. Current Price: \$0.11**
- **2022 First-Ever Mineral Resource 4Q2022**
- **2022 Exploration Results 4Q2022-1Q2023**

Share Distribution

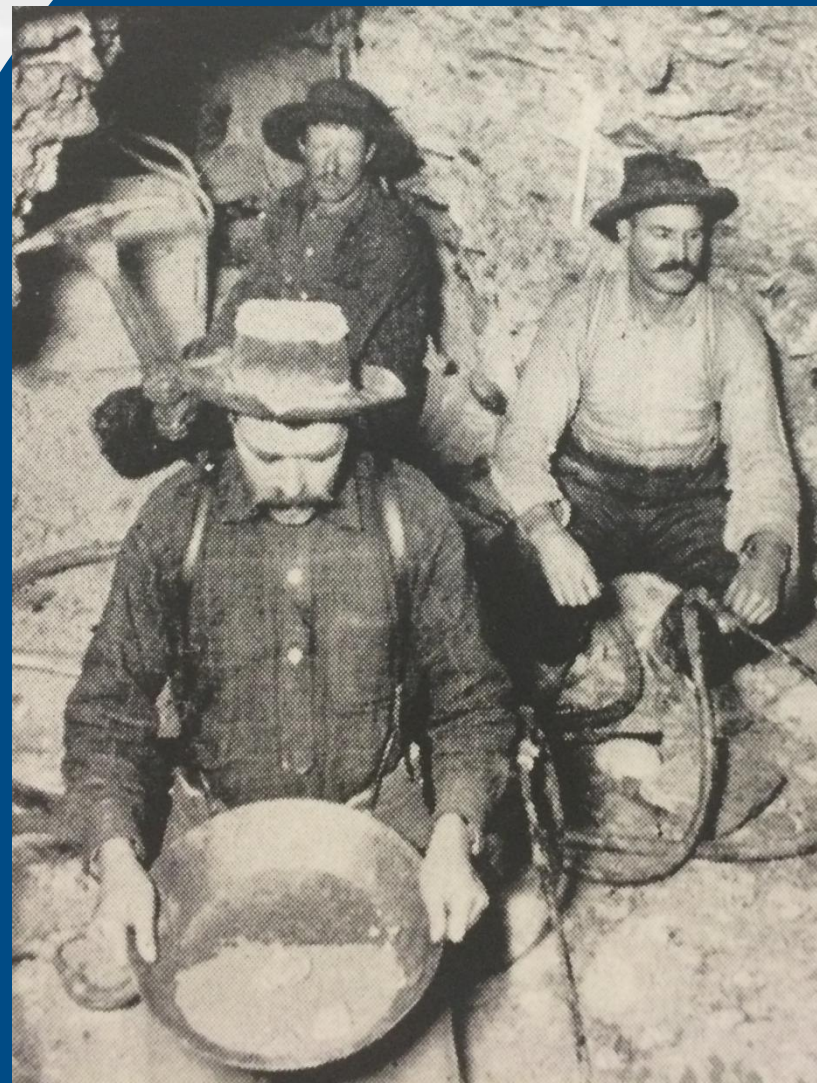
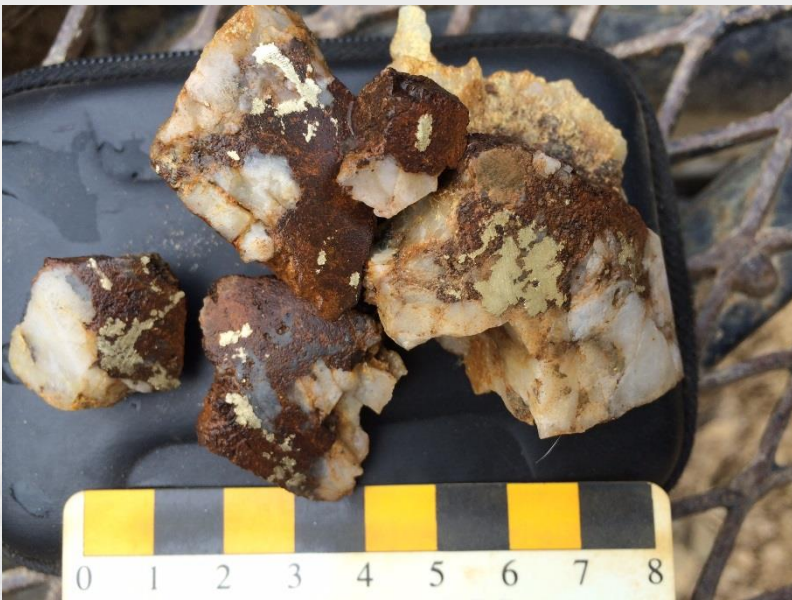


¹ Note: Data as of May? 2022

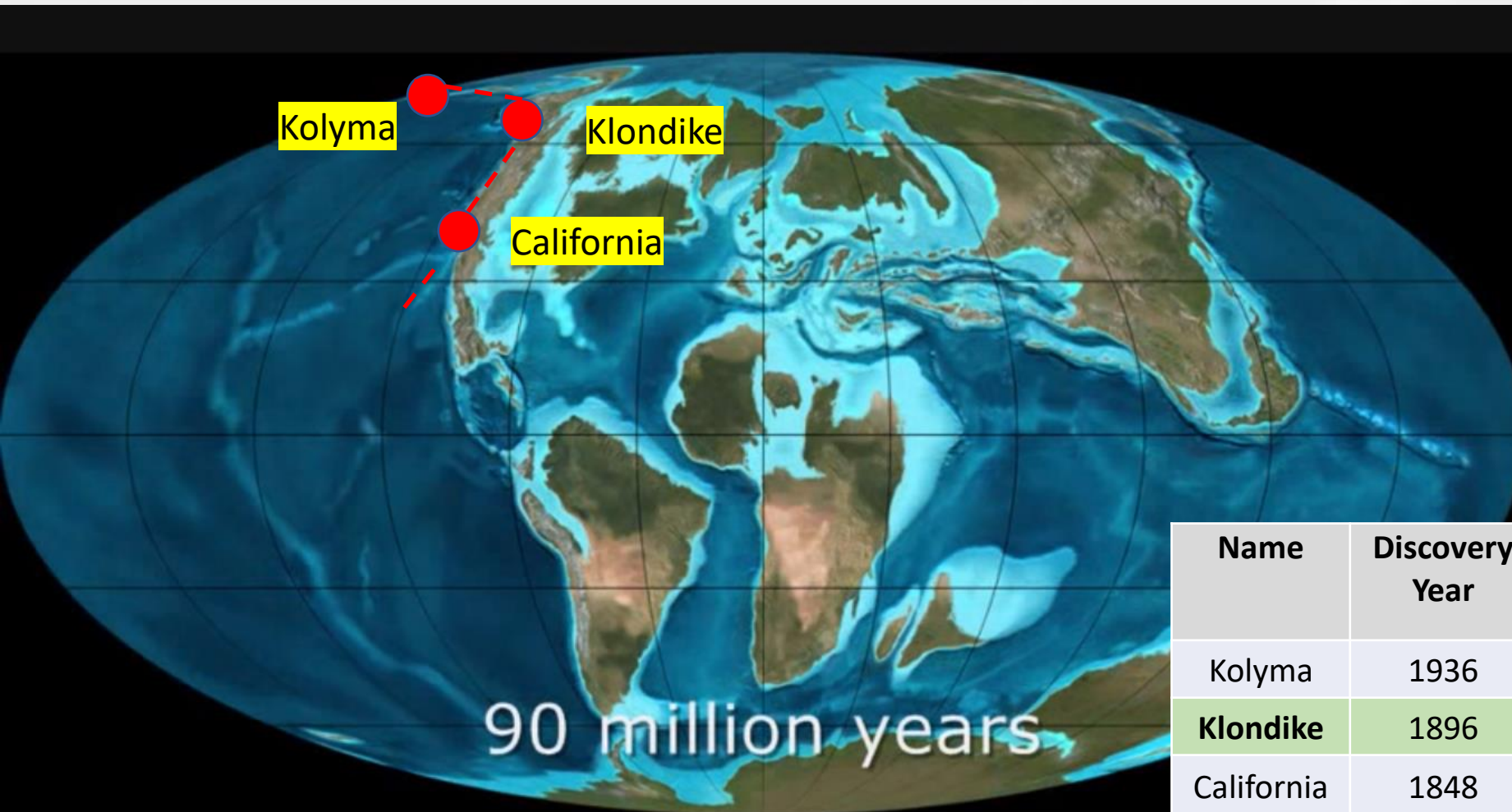
² Source: Yahoo Finance

Gold

Klondike Gold Rush (1896-2021): 20M oz Au extracted from creeks: “largest unexplained gold anomaly on the planet” 125 years later.



“Gold Rush” Metallogeny: 50 M oz Au Potential



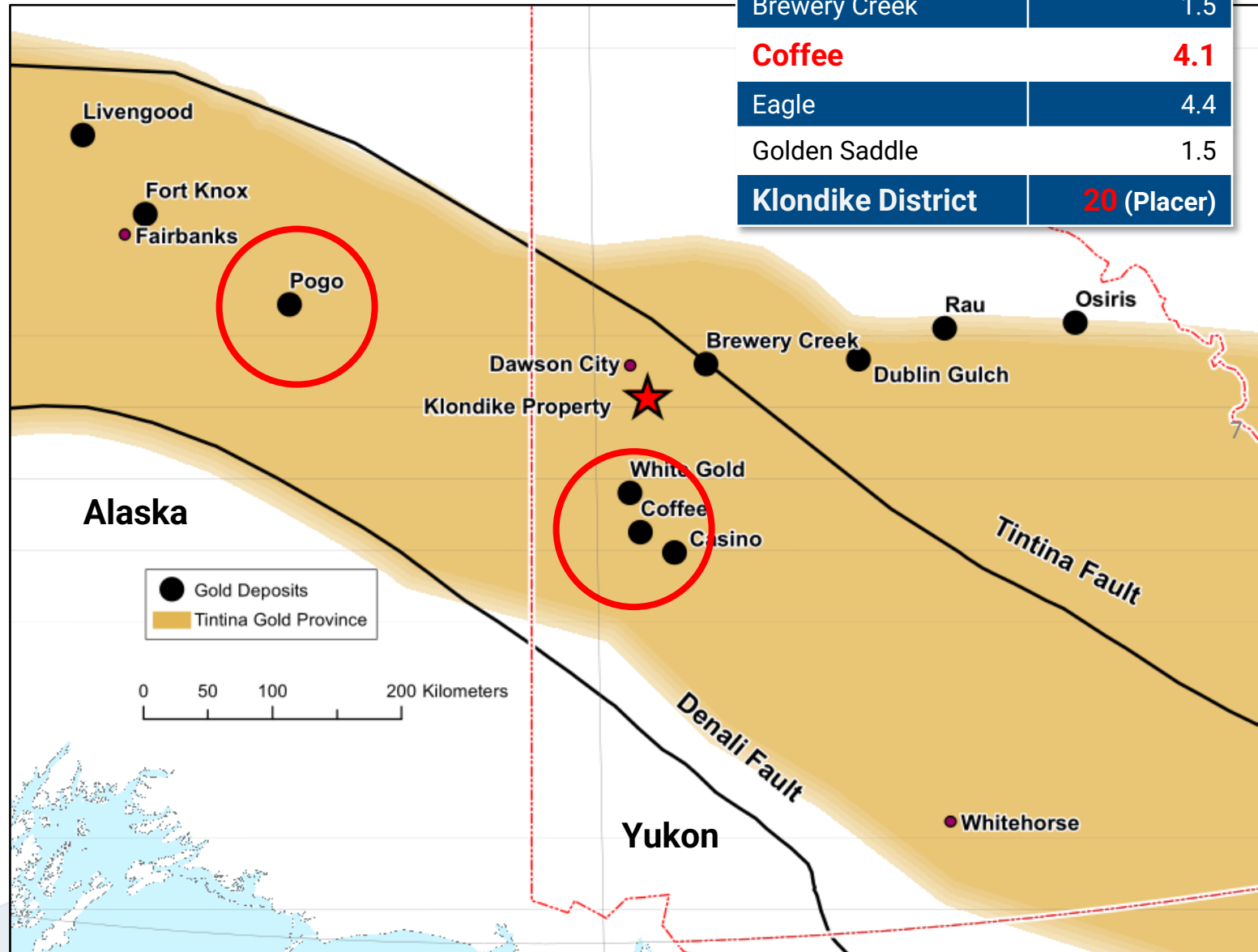
c. 100 Ma Orogenic Au Deposits
 “The metallogenic event(s) produced abundant and widespread small quartz veins and more localized large to superlarge quartz stockworks and disseminated gold deposits.” (*Econ Geol*, 2020)

Name	Discovery Year	Placer Au (M Oz)	Bedrock Au (M Oz)	Endow Multiple
Kolyma	1936	95	(>) 240	2.5
Klondike	1896	20	0 (50?)	(2.5?)
California	1848	43	118	2.7

World-Class Comparison

- Tintina gold province hosts several world-class gold deposits
- Numerous producing mines and advanced projects throughout the district
- Crustal-scale structures controlling gold mineralization creating world class orogenic deposit environment
- **Pogo, Coffee: similar orogenic gold deposits vs Klondike dated at ~105 Ma**

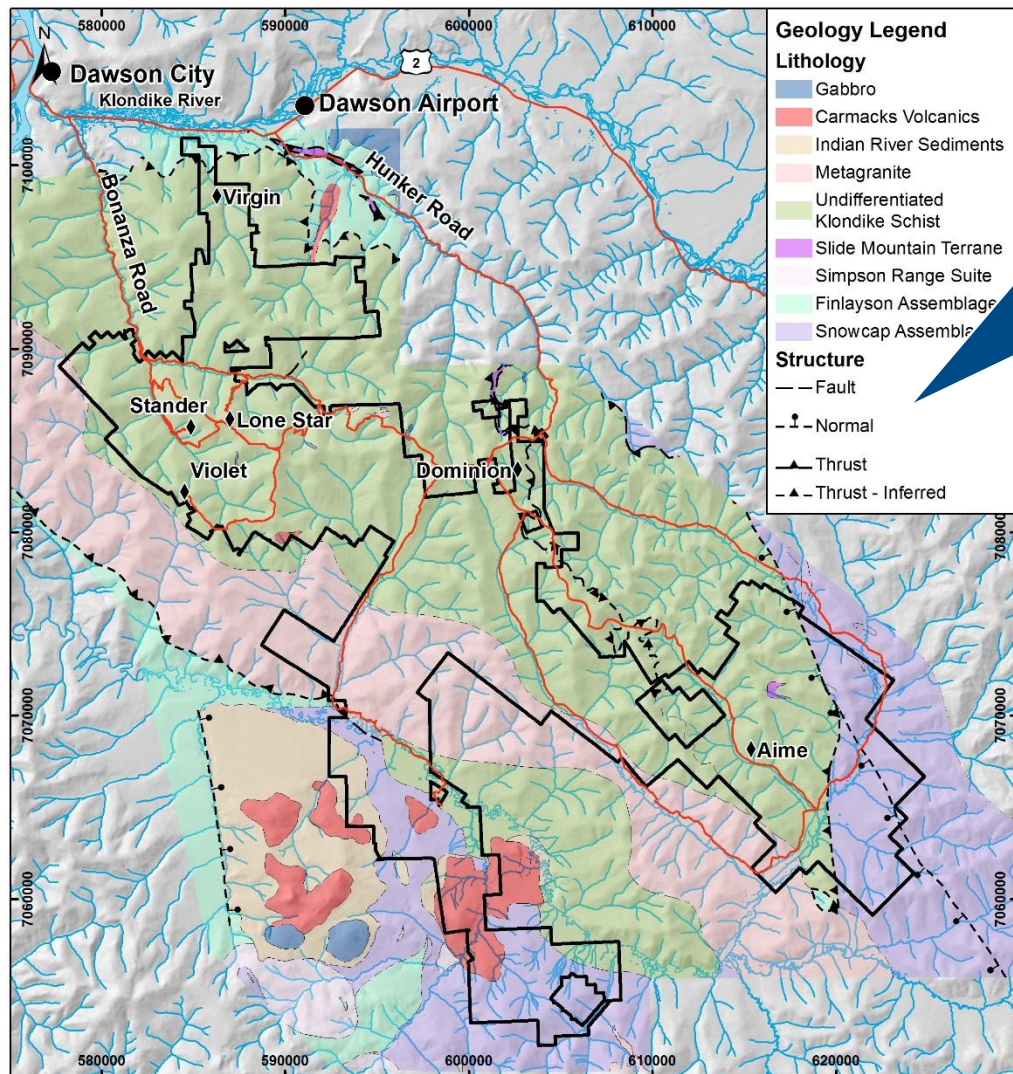
Deposit	Ounces (Moz)
Pogo	7.6
Brewery Creek	1.5
Coffee	4.1
Eagle	4.4
Golden Saddle	1.5
Klondike District	20 (Placer)



2004 GSC compilation

Comparison of Geology Maps

May 2022



NO FAULTS

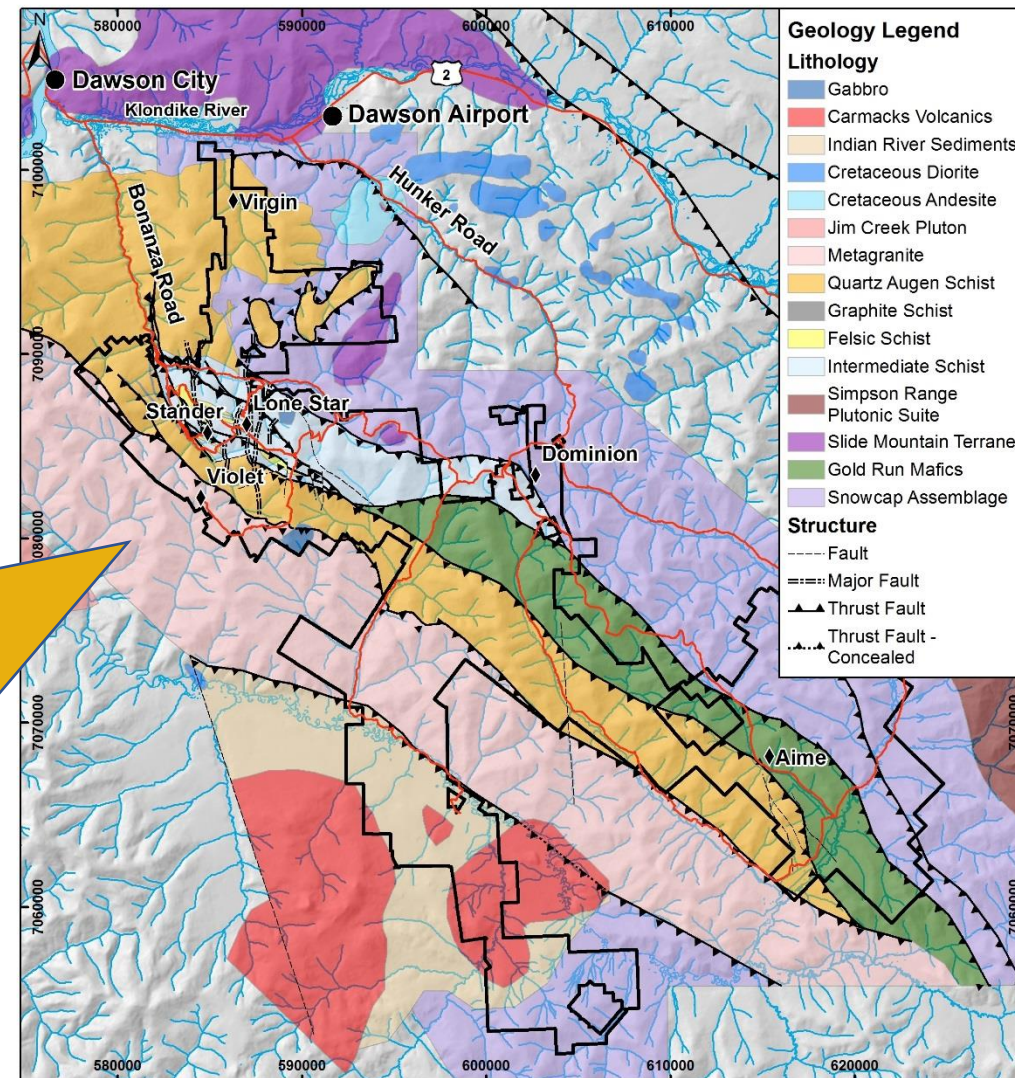
GEOLOGY IS
“UNDIVIDED”

MAJOR UNITS
ARE WRONG

CRUSTAL
SCALE FAULTS

RECOGNITION
OF MAJOR
UNITS

RECOGNITION
OF TERRANES



Research Partnerships / Collaborations



PhD.



Natural Sciences and Engineering
Research Council of Canada



MSc.

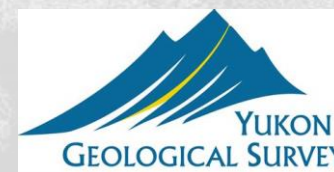


HBSc.



LIDAR mapping

GeoCloud Analytics
making resources spatially aware



Bedrock Geology
Surficial Geology

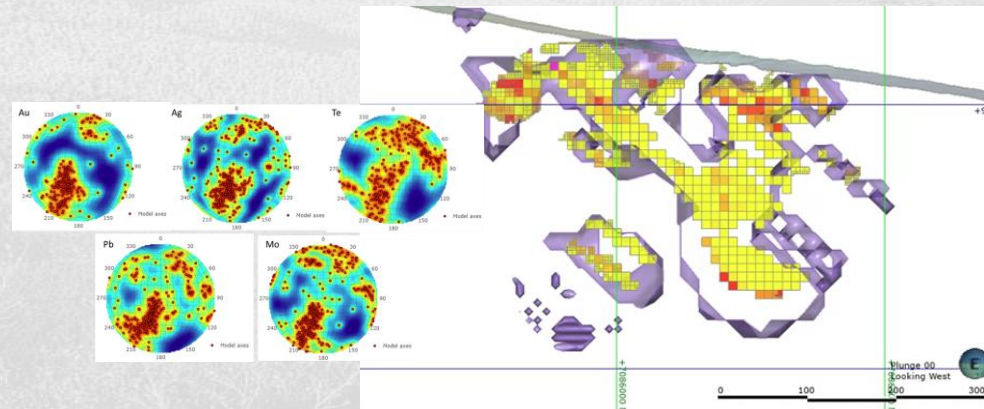
2022 Research Producing Results



- ☐ 1 research grant funded
- ☐ 1 research grant pending



- ☐ 1 research grant funded
- ☐ 1 research grant pending



WORLD CLASS POTENTIAL

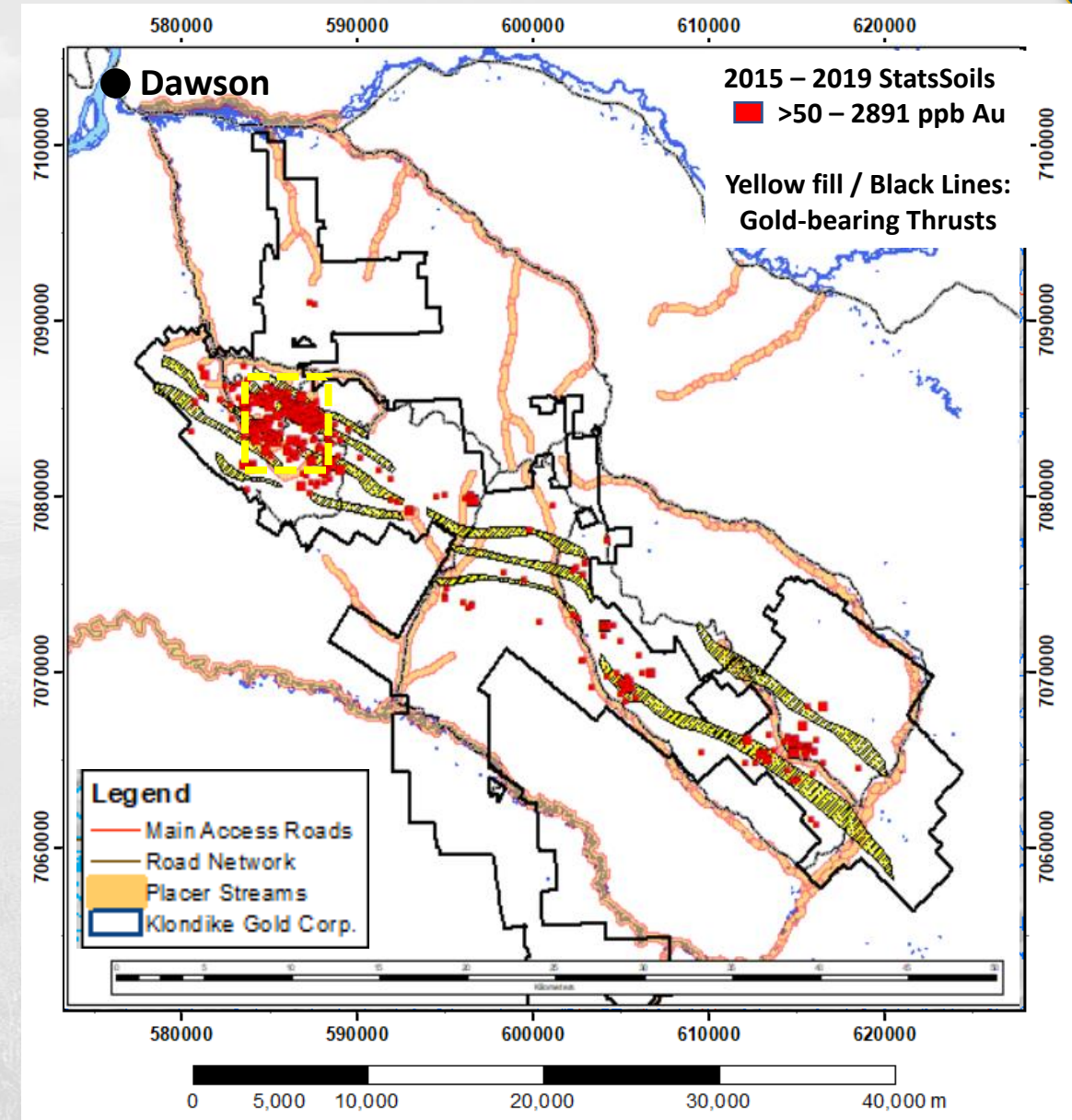
The Klondike District Property

20 M oz Au extracted from the Klondike District Property creeks from 1896 – present

Work (2015-2022) discovers multiple 50-kilometer gold-bearing structural sources.

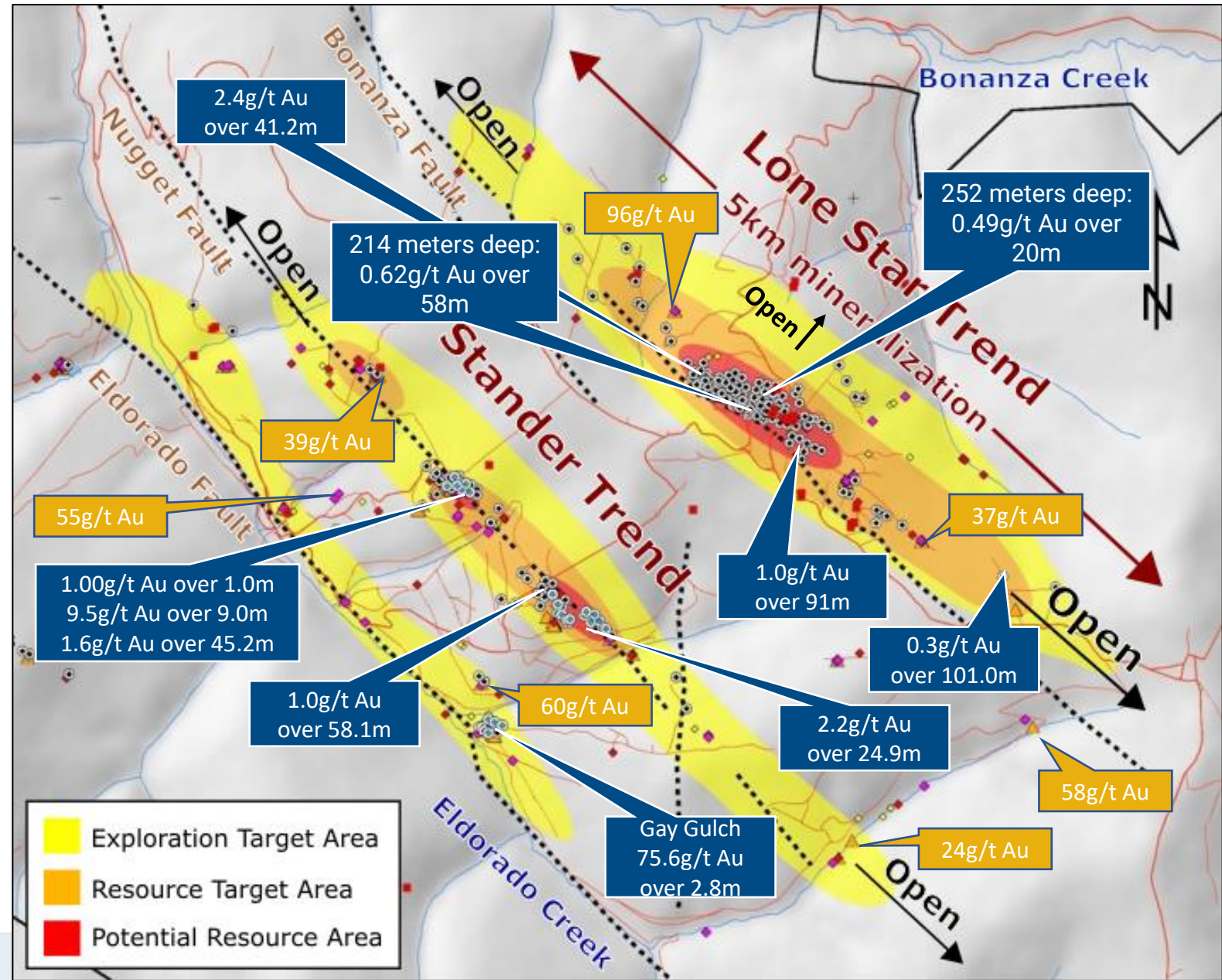
Exploration and resource delineation program in progress at Lone Star Zone and Stander Zone and Gay Gulch Showing (yellow dashed box area).

*Plan delivery of maiden resource in 2022.



Exploration Potential

- Lone Star Zone:**
 - 5km in Au-soil, outcrop, ddh.
 - Open along-strike to NW and SE; open downdip to NE
 - Deepest holes indicate potential at depth (to 300 m)
- Stander Zone:**
 - 5km in Au-soil, outcrop, ddh.
 - Open along-strike to NW and SE
- Gay Gulch Showing:**
 - 75.6 g/t Au over 2.8m



Pipeline | Multiple Discoveries

2015

Initial Exploration

- Drill 19 holes; 14 hit visible gold.
- Discovery hole Gay Gulch:
76 g/t Au over 2.8 m
- Discovery hole Stander Zone:
5.3 g/t Au over 7.6 m

2017

Testing Lone Star Zone

- Drill 70 holes
- Lone Star Zone: 2.4 g/t Au over 40.1 m
- Recognition of Rabbit Creek Thrust and D₃/D₄ faults

2019

High Grade Quartz Vein

- Drill 51 holes
- Stander Zone:
1009 g/t Au, 1036 g/t Ag over 1.0 m and 9.5 g/t Au over 9.0 m

2021

Resource Drilling

- Drill 63 holes
- Stander Zone: 1.5 g/t Au over 48m
- Lone Star Zone: 1.08 Au over 50m

2016

Disseminated Gold

- Drill 51 holes
- Stander Zone:
5.1 g/t Au over 14.3 m
- Discovery hole Lone Star Zone
2.4 g/t Au over 37 m

2018

Drilling and Structural

- Drill 87 holes
- Lone Star Zone: 1.0 g/t Au over 91 m; 6.1 g/t over 8.45 m
- Property-wide Geoscience
- Discovery hole Gold Run:
1.2 g/t Au over 13.5 m

2020

Resource Drilling

- Drill 52 holes
- Stander Zone: 7.6 g/t Au over 10.5 m
- Lone Star Zone:
1.1 g/t Au over 61.1 m

2022

NI43-101's

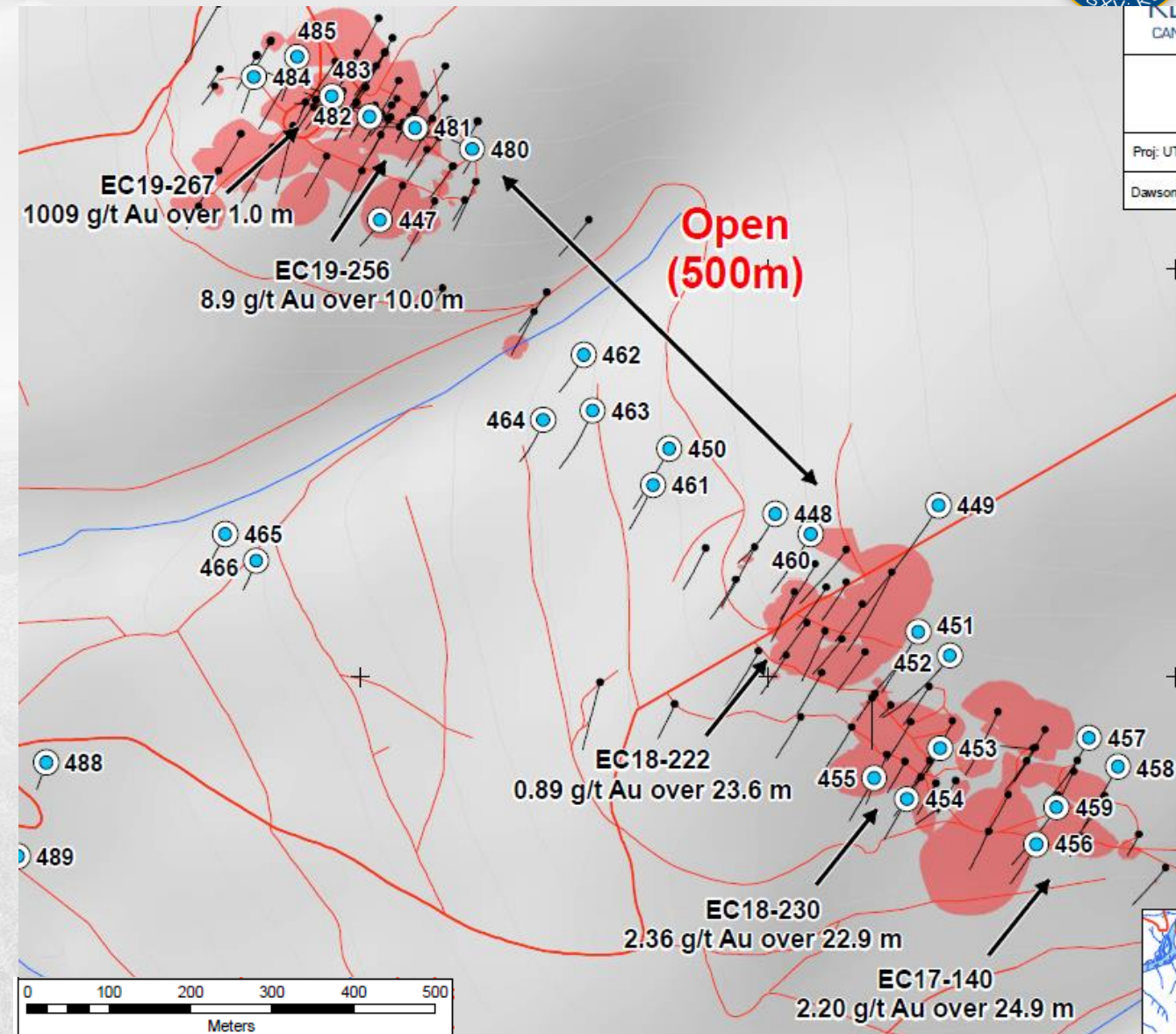
- NI43-101 Geology
- **First Mineral Resource upcoming**
- **Exploration Drilling**

2022 Drill Targets

- Stander Zone – 24 holes
- Extensive sheeted vein stockwork

Work objectives:

- Test the obvious 500 meter along-strike gap in mineralization.
- Test 'in front' and 'behind' for limits to mineralization.
- Test across-strike for structural repeats.
- Test for different Au-mineralization orientation (holes 480-484).



2022 Drill Targets

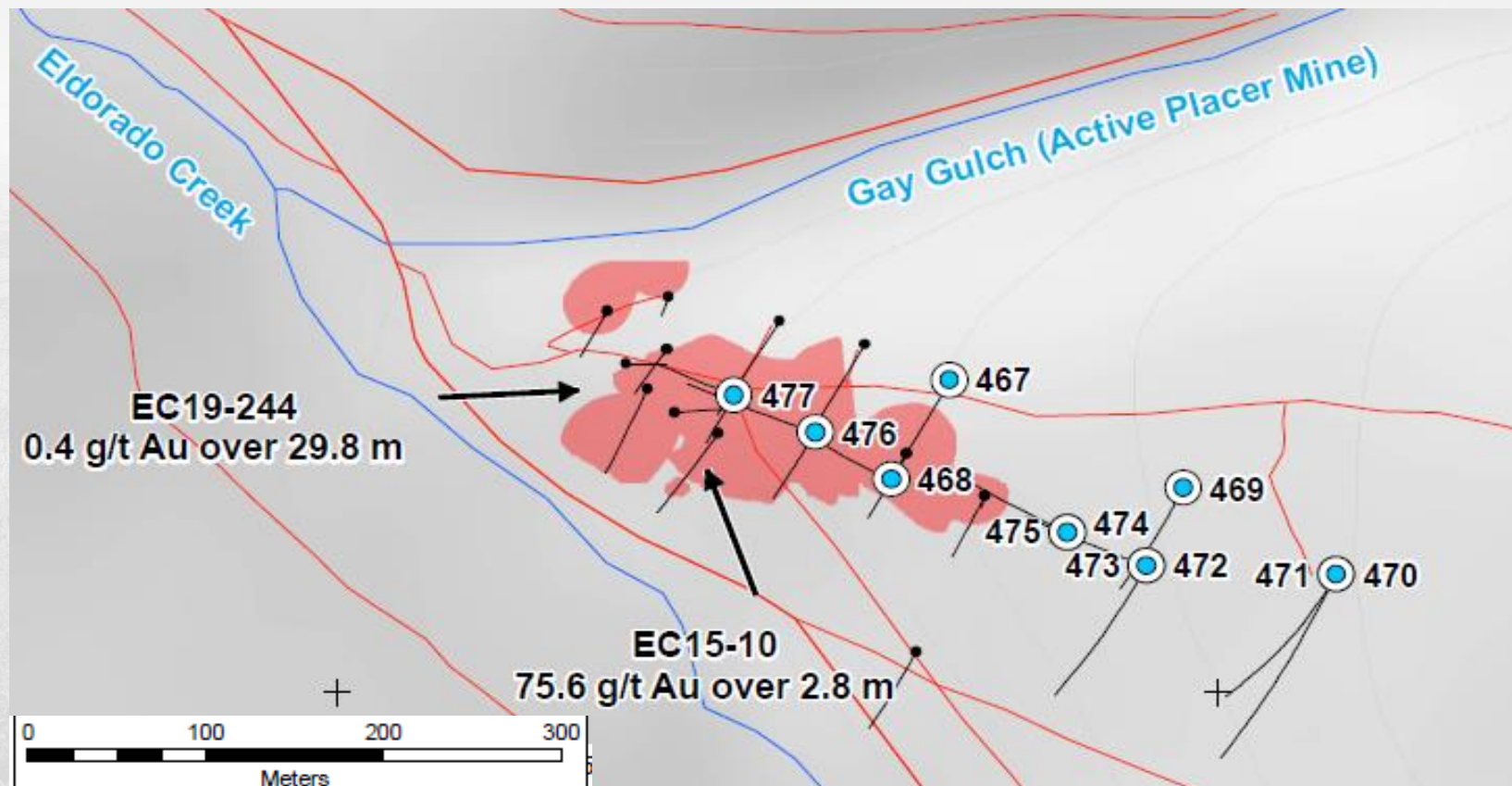
- ❑ Gay Gulch Zone – 11 holes
- ❑ Sheeted vein stockwork.

Work objectives:

- Test along-strike.
- Test for different Au-mineralization orientation (holes 468, 474-477).

Significant Visual Result(s)

- Discovered silicification.
- Discovered quartz-breccia vein with visible gold



2022 Drill Targets

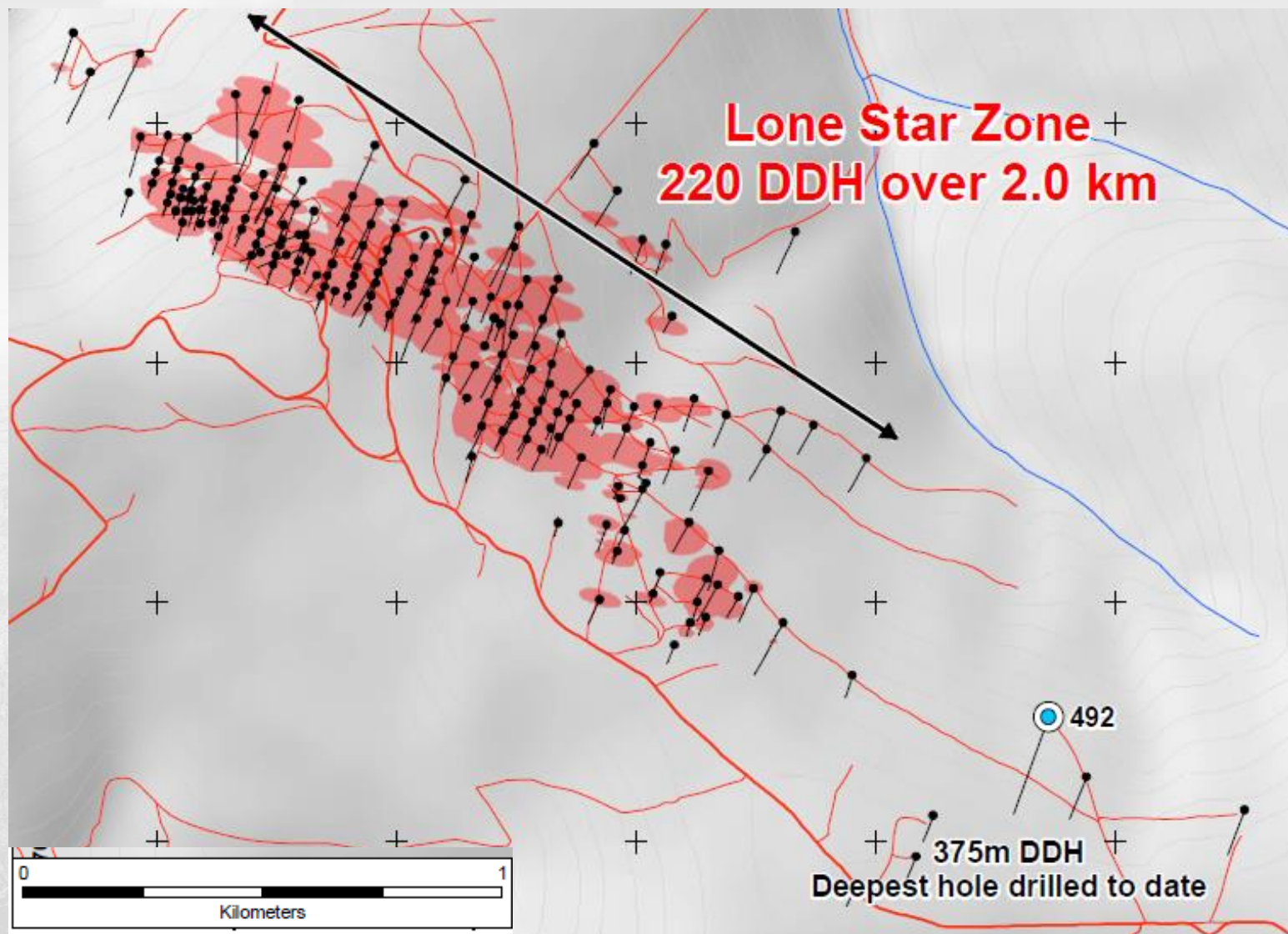
- ☐ Lone Star Zone – 1 holes
- ☐ Sheeted vein stockwork
- ☐

Work objectives:

- Test along-strike 1km for structural extension and gold mineralization.

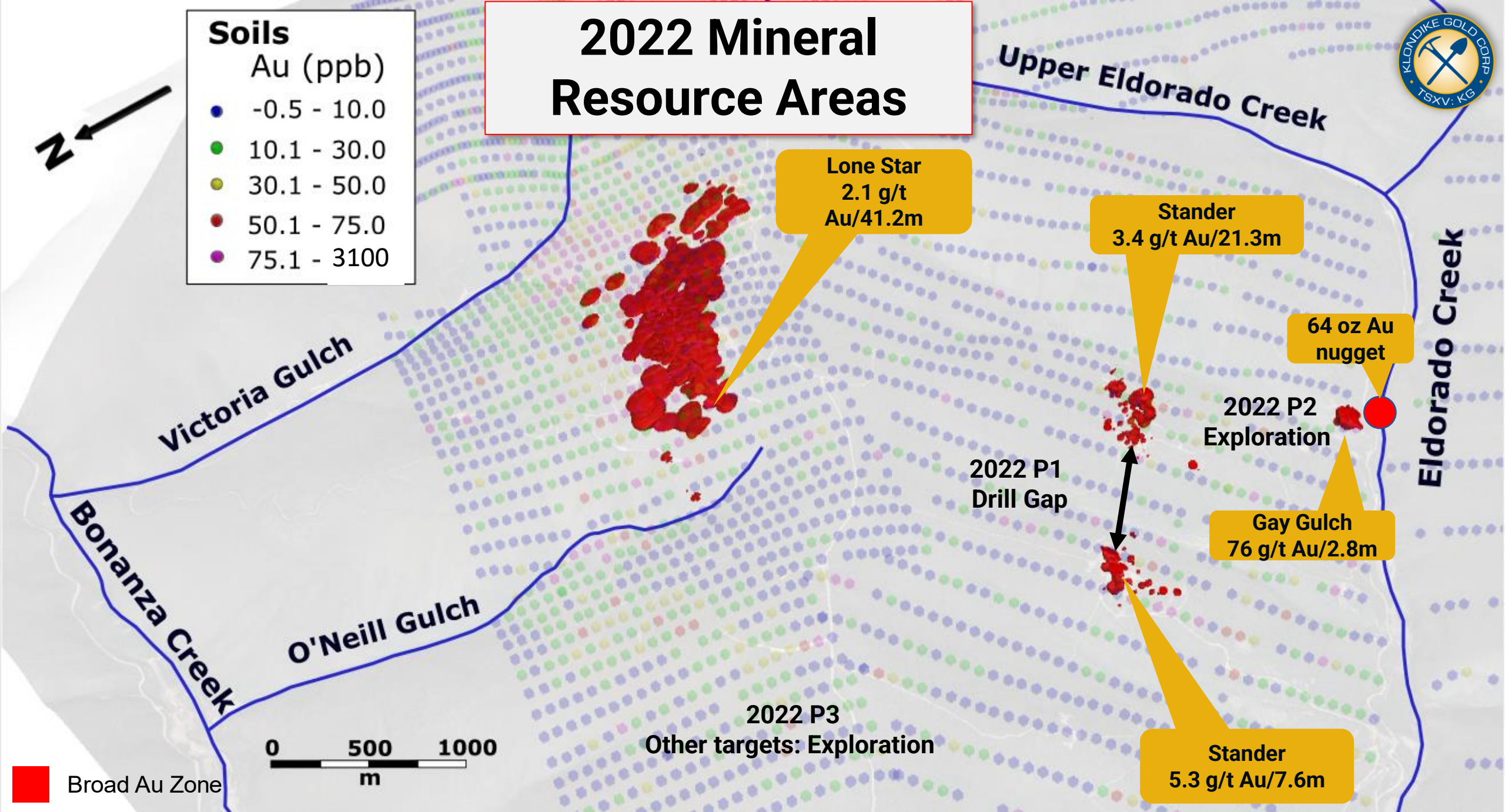
Significant Visual Result


- Documented 'pyroxenite' in crustal scale thrust fault.



2022 Mineral Resource Areas

Soils	
Au (ppb)	
●	-0.5 - 10.0
●	10.1 - 30.0
●	30.1 - 50.0
●	50.1 - 75.0
●	75.1 - 3100



 Broad Au Zone



Gold Weigh-Up Recently

10 Year Placer Mine Permit

- Covers Lone Star and Stander Zone surface

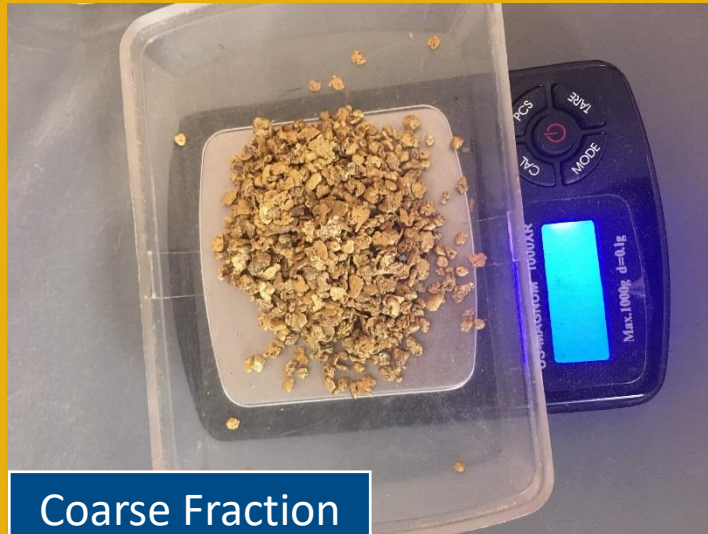
- Allows mine haul road construction/upgrade

- Renewal of mine permit that currently produces a small gold royalty (20-50 oz per year revenue) to Klondike Gold.

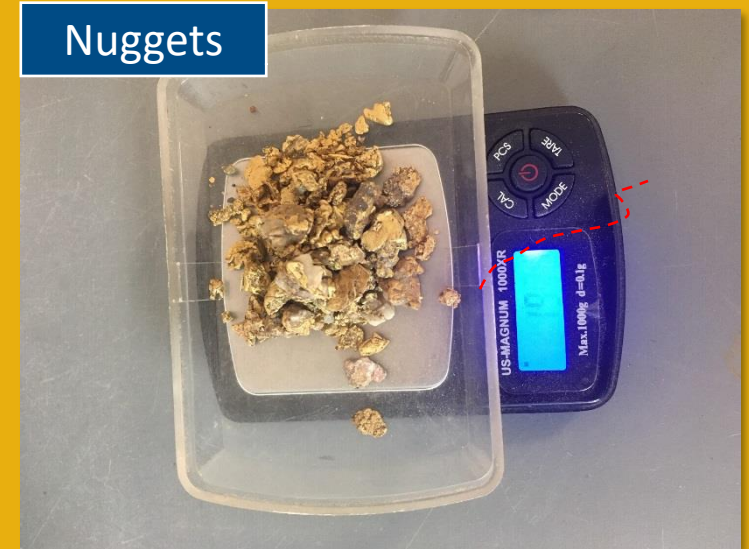
- Mine equipment and skilled workers



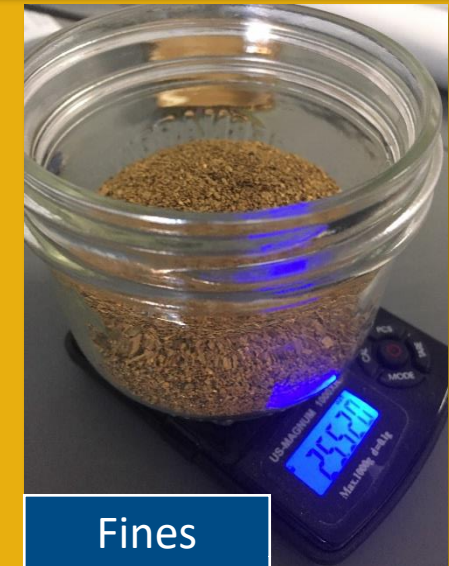
Gold in White Channel on bedrock



Coarse Fraction



Nuggets



Fines

INFRASTRUCTURE ADVANTAGE

- 20 km road network from Dawson City, government maintained.
- Yukon e-grid power / Dawson substation
- Airport / scheduled airlines
- On Klondike Highway
- Available mine equipment and skilled workers



Pinnacle Digest 2019 Podcast video screencaps

NEWS SUMMARY

Updated NI43-101 describing 2022 geology work (no drill results), expected 4Q2022
Mineral Resource Estimate, first ever, expected 4Q2022

2022 Program drill hole assays expected 4Q2022-1Q2023

Research initiatives and material geology updates 4Q2022-1Q2023

Financing for 2023 field season 4Q2022-1Q2023

(Budget for 2023 placer mine infrastructure, test work)



Klondike Gold Corp.

TSXV: KG | FRA: LBDP | OTCQB: KDKGF

2833 – 595 Burrard St. Vancouver BC, V7X 1J1

info@klondikegoldcorp.com

(604) 559-4440

