

Controls to Klondike-Area Gold-Bearing Vein Arrays, Klondike District, Yukon



**2015 YUKON GEOSCIENCE
FORUM & TRADE SHOW**

November 2015 | TECHNICAL PRESENTATION

Whitehorse YT, Canada

www.klondikegoldcorp.com

FORWARD LOOKING STATEMENTS



Statements contained in these following slides and accompanying oral presentation contain certain forward-looking statements within the meaning of the United States Private Securities Litigation Reform Act of 1995 and forward looking information within the meaning of the Securities Act (Ontario) and similar legislation in other jurisdictions. Forward-looking statements can be identified by the use of words such as “plans”, “expects” or “does not expect”, “is expected”, “budget”, “scheduled”, “estimates”, “forecasts”, “intends”, “anticipates” or “does not anticipate”, or “believes”, or variation of such words and phrases or state that certain actions, events or results “may”, “could”, “should”, “would”, “might” or “will” be taken, occur or be achieved. Forward-looking statements involve known and unknown risks, uncertainties and other factors which may cause the actual results, performance or achievements of Klondike Gold Corp. (“Klondike Gold”) to be materially different from any future results, performance or achievements expressed or implied by the forward-looking statements. These forward-looking statements include estimates, forecasts, and statements as to management’s expectations with respect to, among other things, business and financial prospects, growth potential, the size, quality and timing Klondike Gold’s exploration and possible development projects, mineral reserves and mineral resources, future trends, plans, strategies, objectives and expectations.

These forward-looking statements involve numerous assumptions, risks and uncertainties and actual results may vary materially. These statements are based on a number of assumptions, including, but not limited to, assumptions regarding general business and economic conditions, interest rates, the supply and demand for, inventories of, and the level and volatility of prices of gold, silver, zinc, lead, or copper, the availability of financing for Klondike Gold’s programs on reasonable terms, the accuracy of Klondike Gold’s resource estimates (including, with respect to size, grade and recoverability) and the geological, operational and price assumptions on which economic resource models are based, the resolution of environmental permitting and other proceedings, the capacity to obtain qualified personnel, consultants, and contractors and the future operational financial performance of the company generally. The foregoing list of assumptions is not exhaustive.

Events or circumstances could cause actual results to differ materially. Such events include, among others, unanticipated developments in business and economic conditions in the principal markets for commodities and/or financial instruments, changes in the supply, demand, and prices for metals and other commodities, the actual results of exploration activities, conclusions of economic evaluations, uncertainty in the estimation of ore reserves and mineral resources, changes in project parameters as plans continue to be refined, changes in economic and political stability in jurisdictions where Klondike Gold has business interests, environmental risks and hazards, legal disputes, increased infrastructure and/or operating costs, labour and employment matters, and government regulation as well as those factors discussed in the section entitled “Risk Factors” in Klondike Gold’s Annual and Quarterly Reports and associated financial statements, Management Information Circulars and other disclosure documents filed with Canadian securities regulators. Although Klondike Gold has attempted to identify important factors that could cause actual results to differ materially, there may be other factors that cause results not to be as anticipated, estimated or intended. There can be no assurance that such statements will prove to be accurate as actual results and future events could differ materially from those anticipated in such statements. Klondike Gold disclaims any intention or obligation to update or revise any forward-looking statements, whether as a results of new information, future events or otherwise. Accordingly readers/listeners should not place undue reliance on forward-looking statements.

About Klondike Gold Corp.



Klondike Gold Corp. (TSXV: KG) has been conducting mineral exploration in the Klondike gold district, Yukon since 1980 and owns continuously held placer and quartz titles dating from 1896; including 5 of the 11 oldest placer titles in the territory.

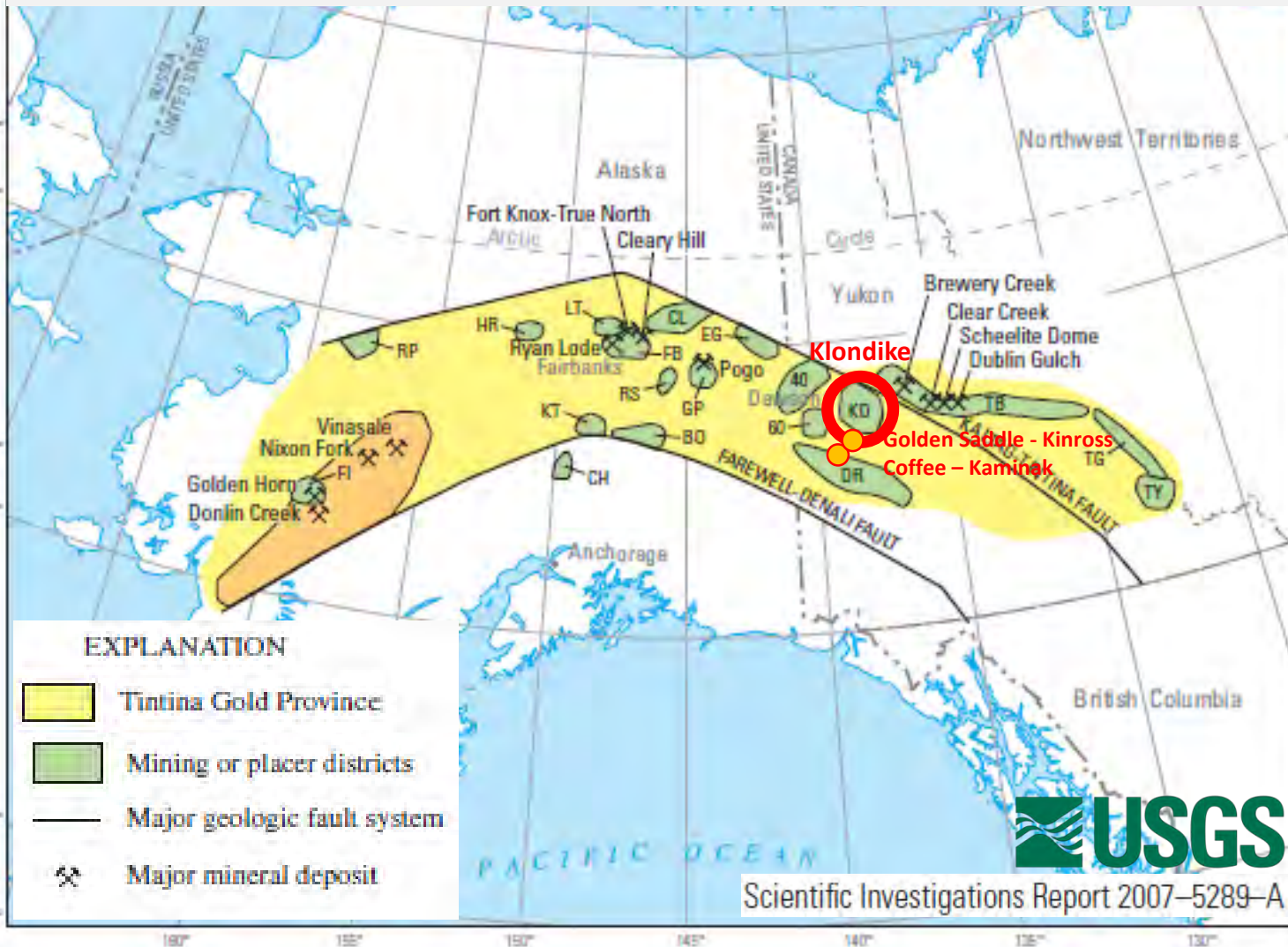
2014: Klondike Gold elected a new Board of Directors, installed entirely new management, consolidated title ownership of properties, consolidated share structure 1 for 10, completed a series of strategic property dispositions and lease agreements, completed a \$2.7M financing, and settled \$1.5 M of accrued debts.

2015: Klondike Gold conducted property wide ground magnetics, orthophotography, drilled 19 holes totaling 1450 meters, and completed extensive remediation of old trenched and disturbed sites. 14 of 19 drill holes intersected visible gold.

Tintina Gold Belt Discoveries



Tintina Gold Belt, Alaska and Yukon



Tintina Gold Belt (“TGB”), Yukon

- TGB in Alaska mined ~75 M oz gold over 30 years.
- Alaskan TGB hosts large gold deposits including:

Donlin Creek:	37 M oz Au (Barrick/Nova Gold)
Livengood:	15 M oz Au (Int'l Tower Hill)
Pogo:	6 M oz Au (@19 g/t Au: Sumitomo)
Clear Hill/Too Much Gold:	2 M oz Au* (@34 g/t Au: Freegold)

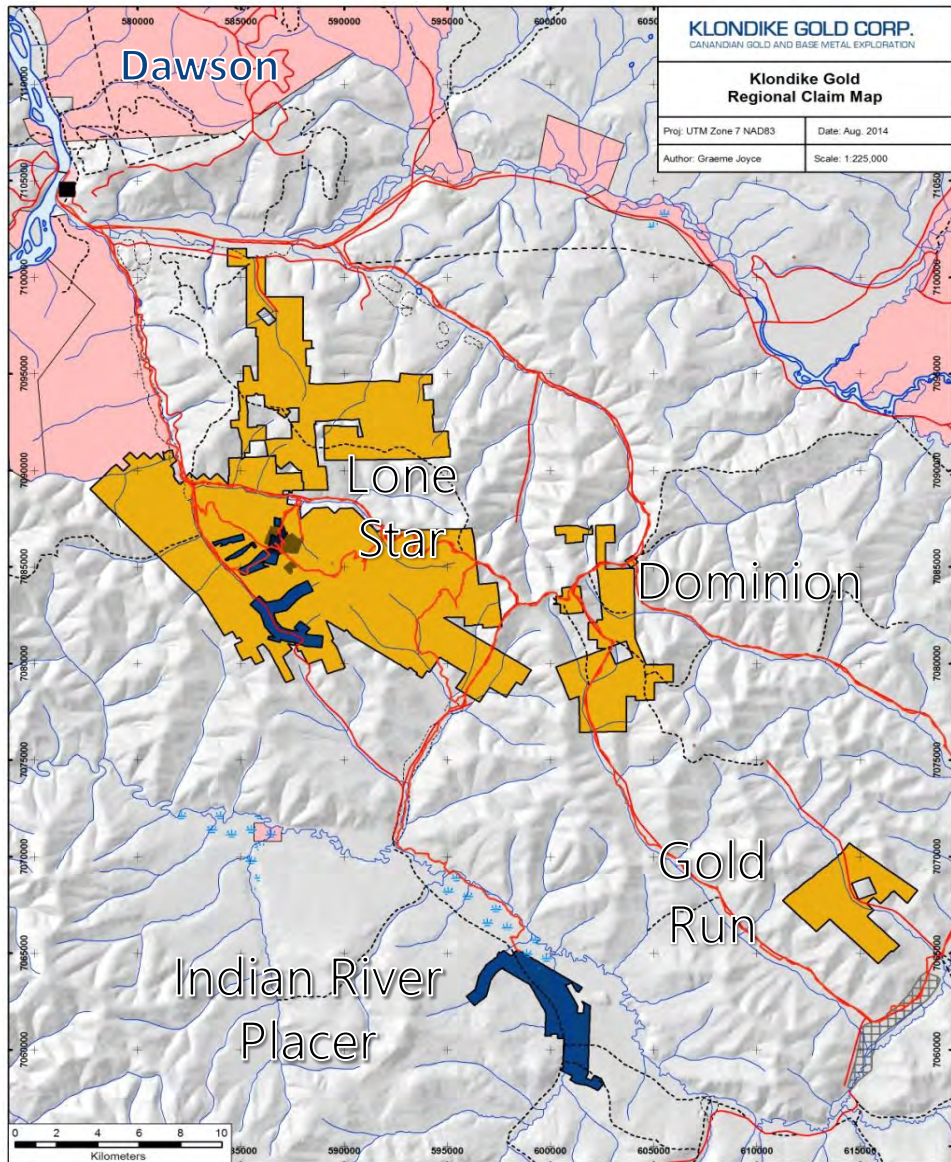
All are associated with rich placer gold districts.

- Recent TGB discoveries in Yukon include:

Golden Saddle	1 M oz Au (Kinross)
Coffee	4 M oz Au (Kaminak)

- In Yukon since 1897, **20 M oz gold** has been mined from gravels within the Klondike placer gold district.
- *Klondike is one of the largest gold geochemical anomalies on the planet with no identified source(s).*

YUKON PROPERTIES



Quartz Claims

🛠️ 1,405 Quartz claims totaling 250 sq km.

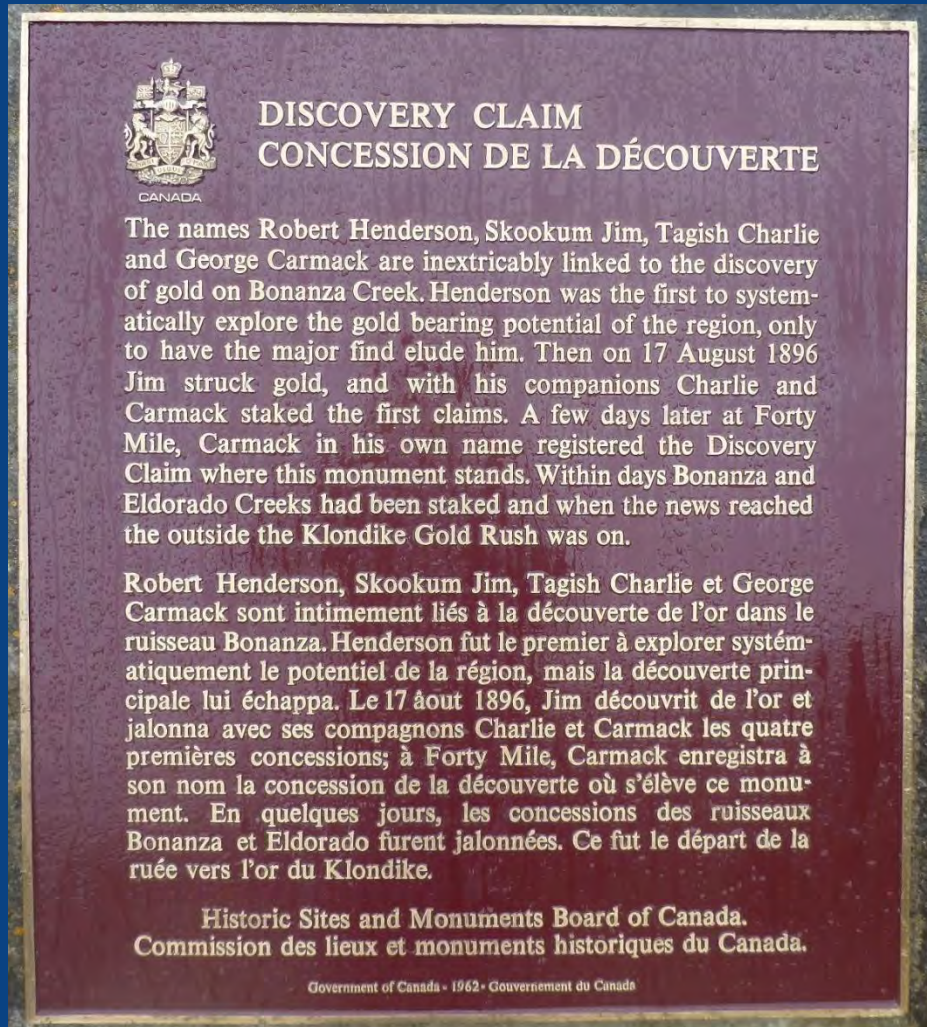
- 100% ownership; no royalties.
- Properties span the Klondike district.
- On the outskirts of Dawson. Paved road, power.

Placer Claims

🛠️ 353 placer claims totaling 20 sq km.

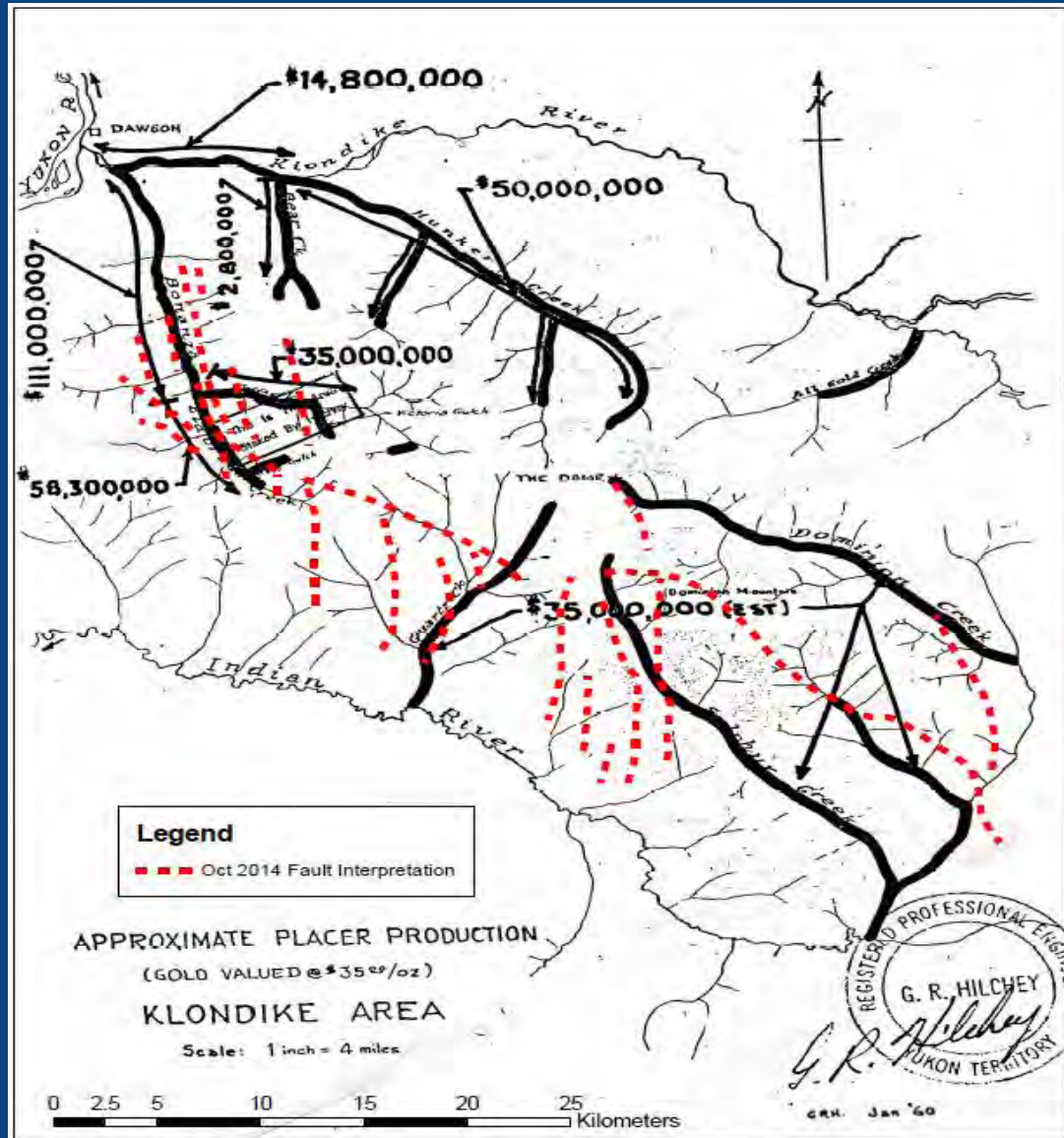
- 100% ownership.
- Indian River/McKinnon Creek leased for 15% production royalty; shown on Discovery Channel. The "Hoffmans".
- 2014 KG gold revenues \$275,000.
- 2015 KG gold revenues \$525,000

Bonanza Placer Gold Discovery 1896



20 M oz gold placer production 1896 – 2015.

20 M oz Placer Production 1960's view



Where does 20 M oz gold come from?

White Channel gravel, eroded from Klondike Schist into distinct sediment layer 3.5 M yr ago. Transported 10's to 100 kms.

Bedrock sources, still eroding and accumulating in (very) local gravel. Transported 0.1 to 1's kms.

East side of Eldorado Creek has no White Channel. West side of Eldorado Creek has White Channel.

How to explore for local gold sources?
Is there any reason to explore at all?

Geochemistry? Prospecting?



Looking South Up Eldorado Creek c.1897



Eldorado Creek near Grand Forks 1897



Prospecting on Ridge Crests: 1897 - 2015



- Lone Star Mine
- Violet Mine
- Many prospects and shafts



- Prospecting works.
- Labour intensive!

Lone Star Mine (c. 1910) Quartz Veins

Boulder Lode Open Cut

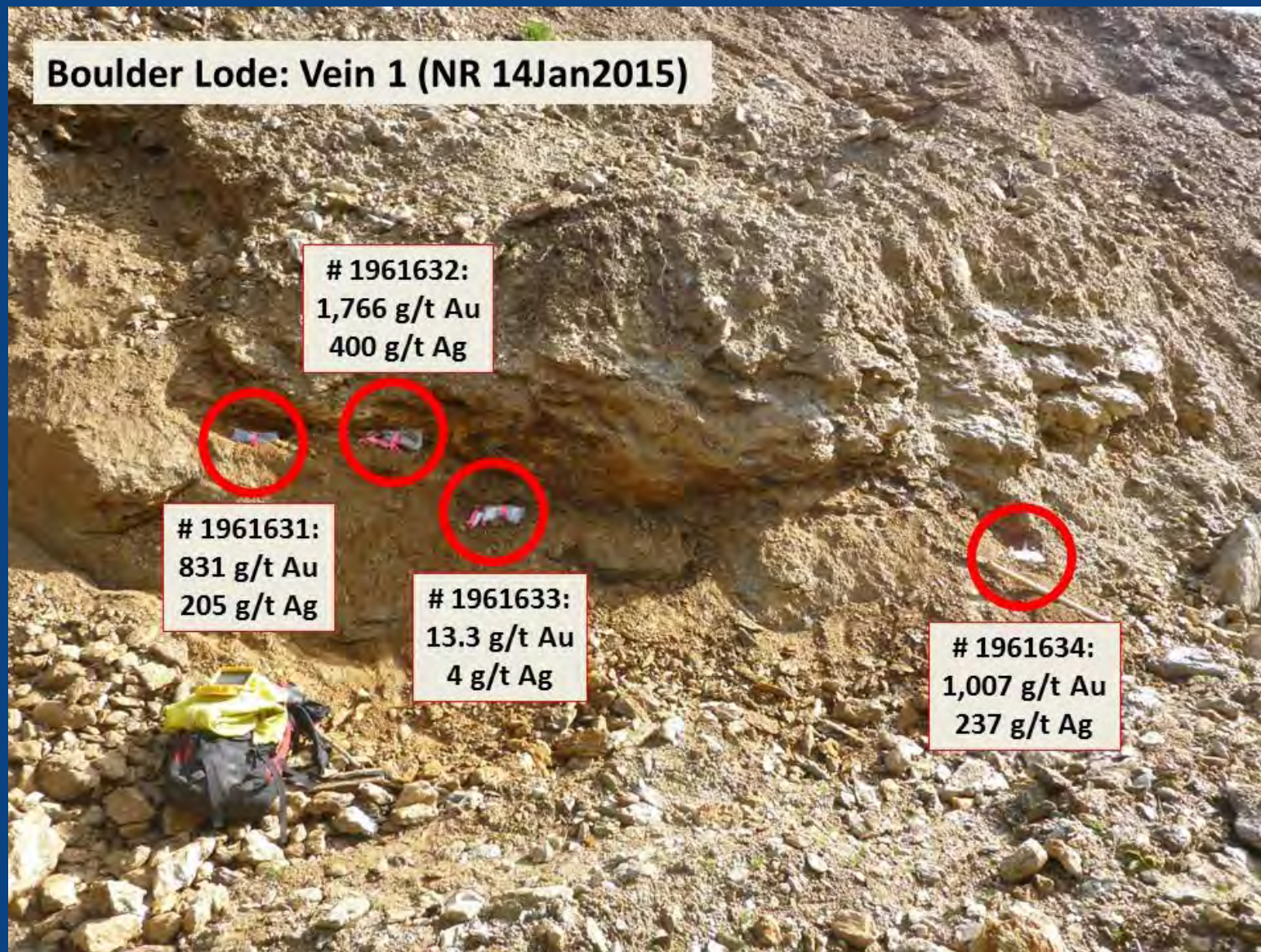
Historic mined estimate 5 g/t Au

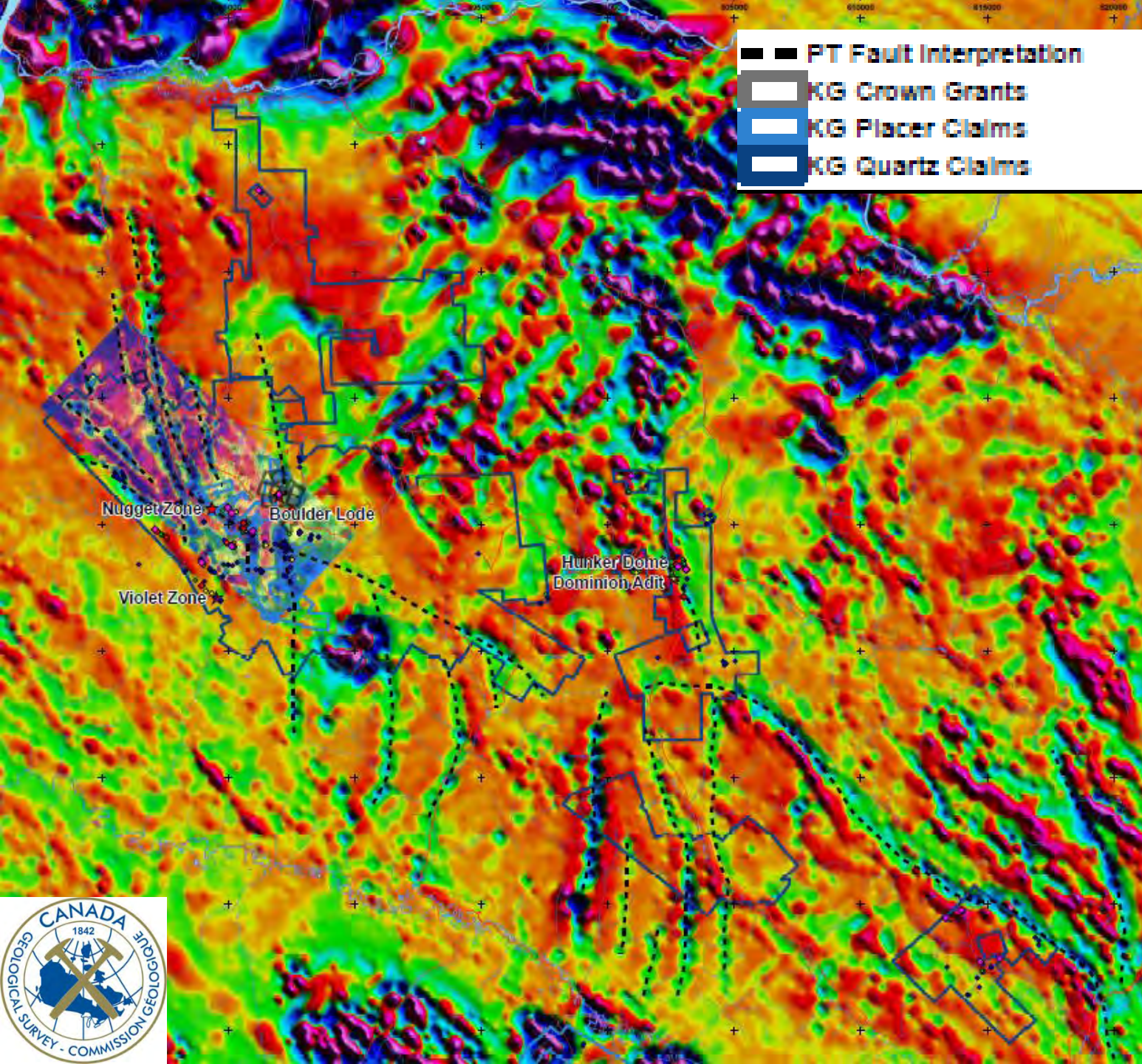
KG samples average ~30 g/t Au in the front wall, from 4 QV's.

2014 samples of back wall new QV assay ~1 %/t Au.

There are bedrock Au-veins! Local. Obviously.

Why are the veins there?

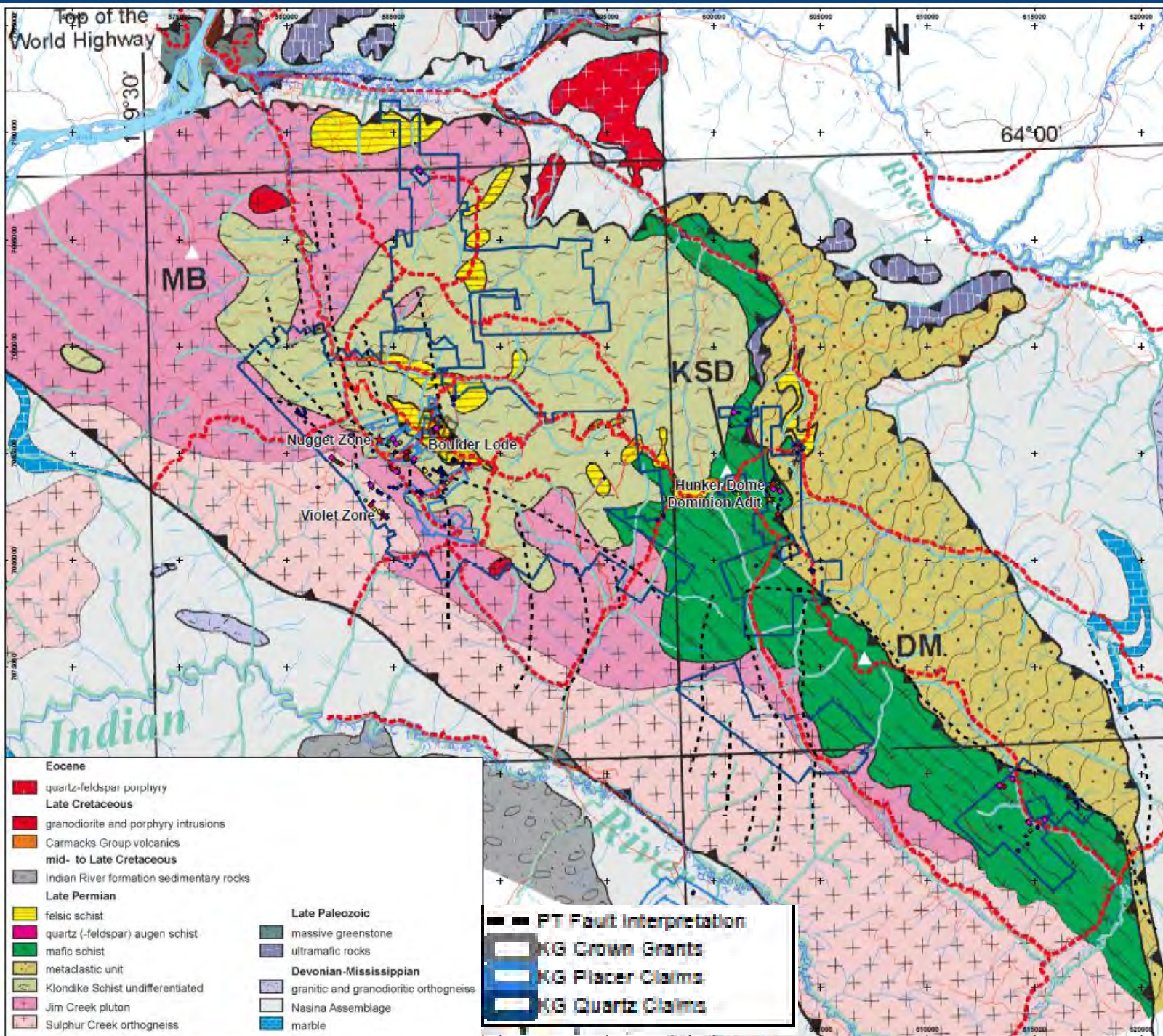




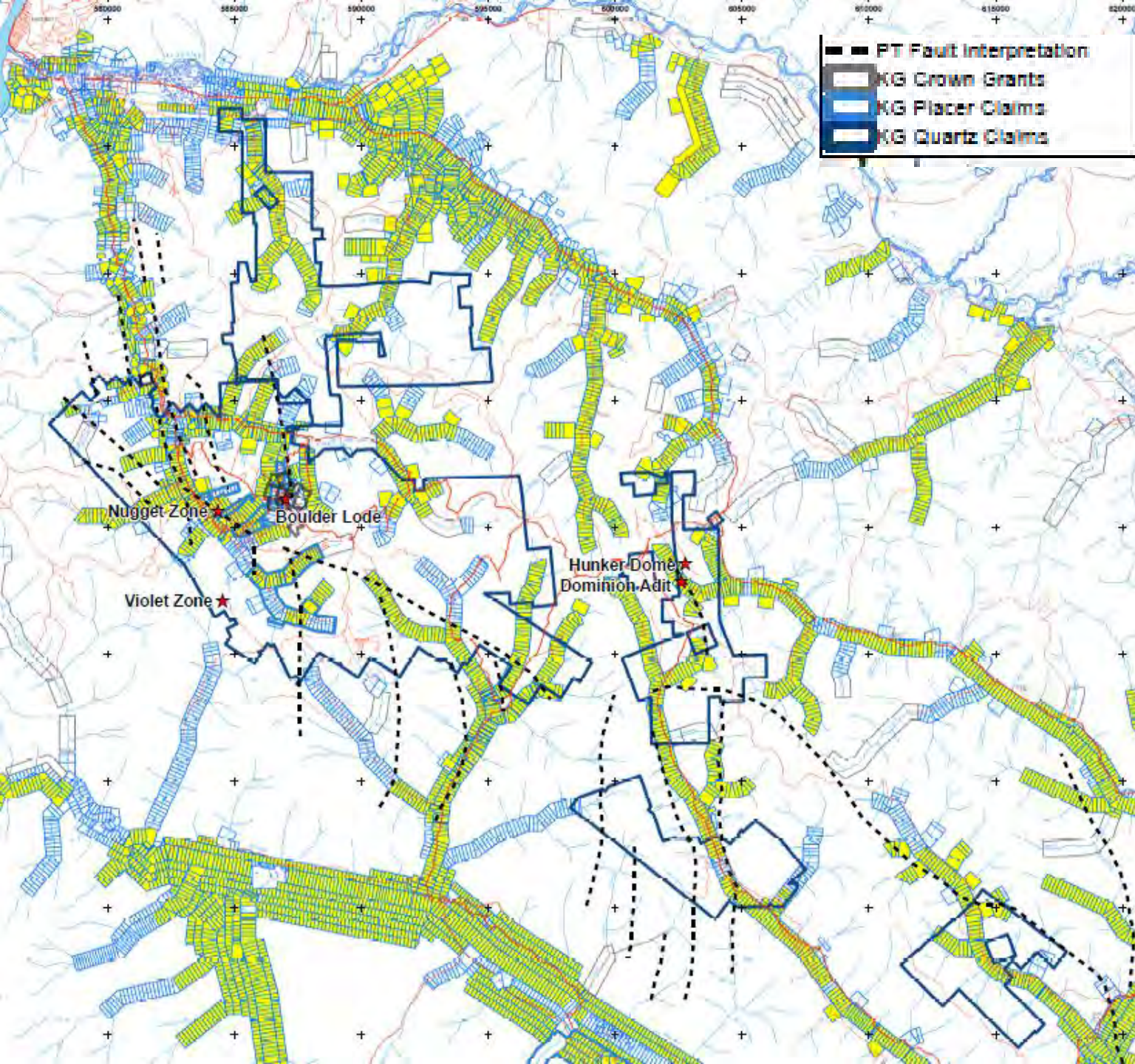
GSC AIRBOURNE MAGNETICS AND FAULTS

SYN-POST D4+



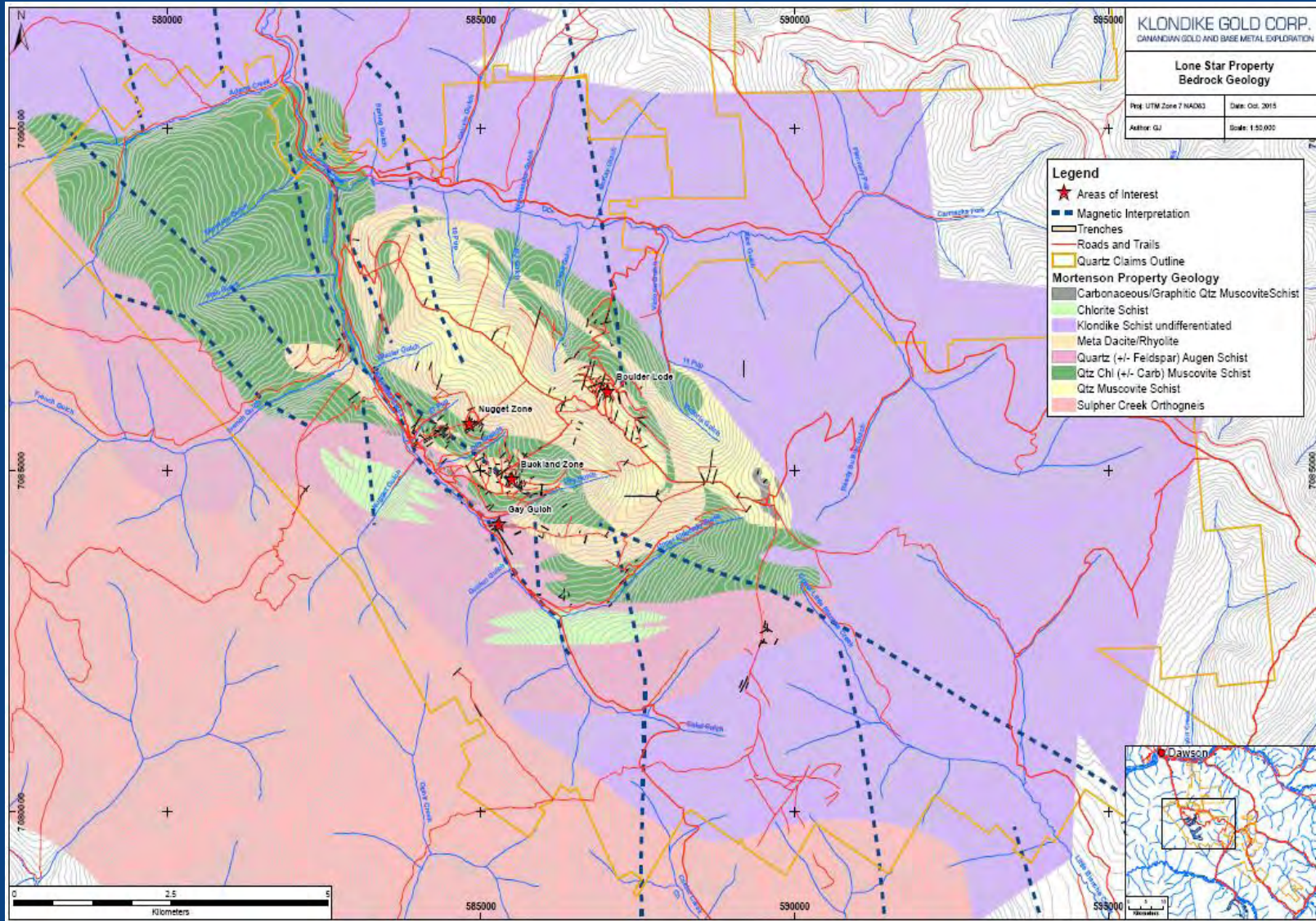


GEOLOGY AND FAULTS

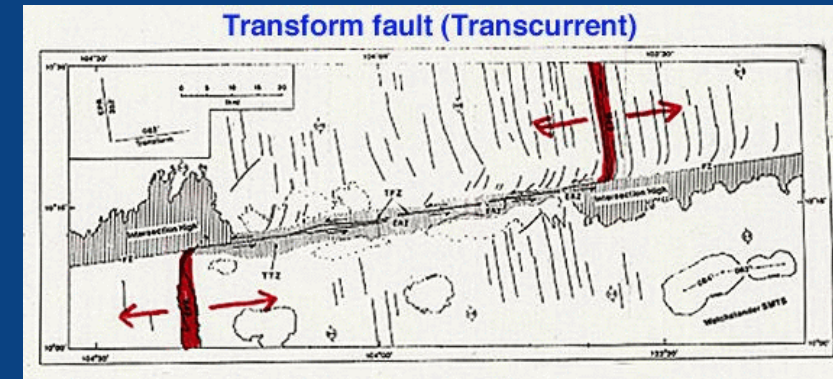


PLACER PRODUCERS, PLACER EXPLORERS, AND FAULTS

Dextral Fault – Horsetail Structures, Long Lived

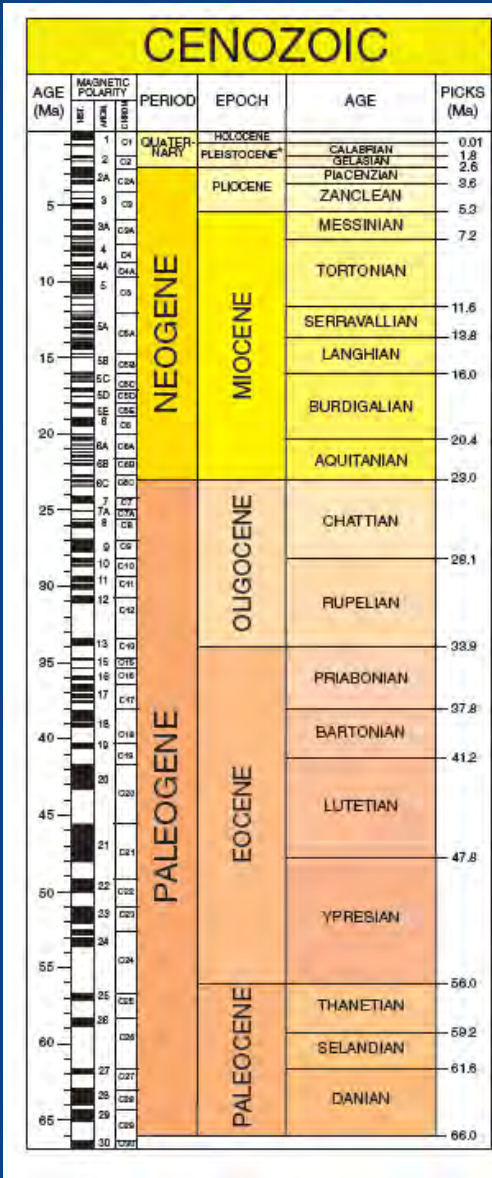


- 1500 meters measured lateral displacement on pinnate extension fractures along 50 km fault length

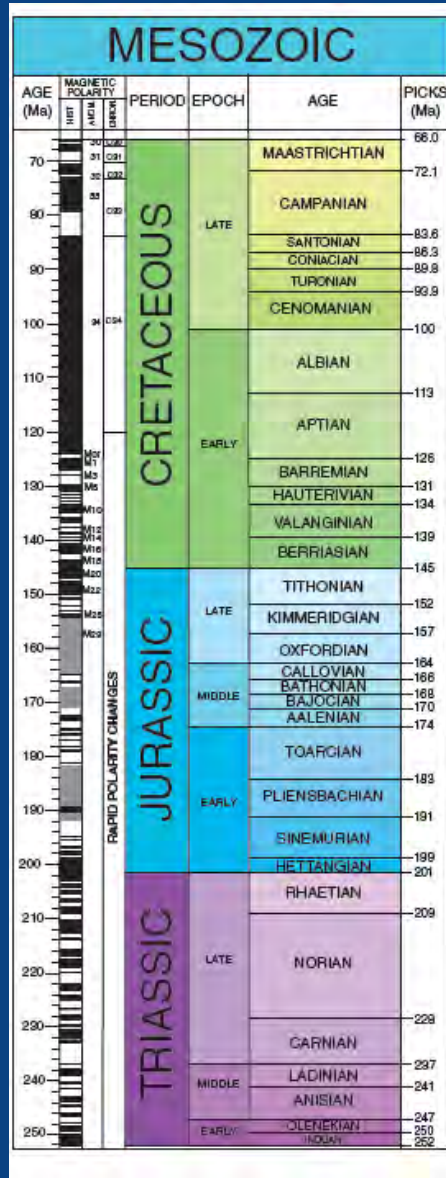


- Estimate 150,000 year to 1.5 M year active displacement.
- Probable 0.5 to 1.0 M yr process

TINTINA GOLD BELT GOLD METALLOGENY



Eocene dykes

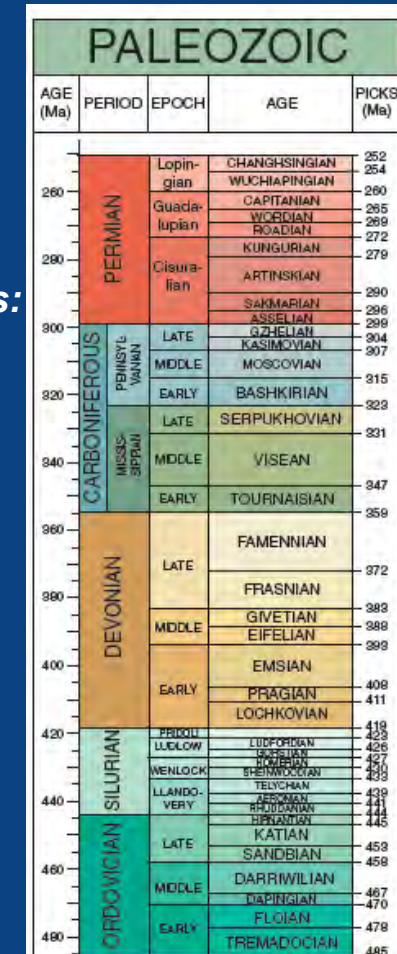


Au Intrusions:
 Casino 8M oz Au
 Coffee 4M* oz Au
 Donlin Creek 37M oz Au

Au Intrusions or Au-QVs:
 Fort Knox 4M oz Au
 Cleary 2M oz Au
 Pogo 6M oz Au

Orogenic Au-QV's:
 Klondike 20M oz *placer*
 Golden Saddle 1M oz Au

Au (Cu) Intrusions:
 Minto 0.8M oz Au / 1.5G lb Cu



Klondike Schist

2015 “Big Picture” Results



Previously unrecognized dextral fault system.

Long-lived faulting c. 0.5M – 1.0M+ years.

Orogenic vein gold model.

Fits with metallogenic criteria; part of a productive epoch.

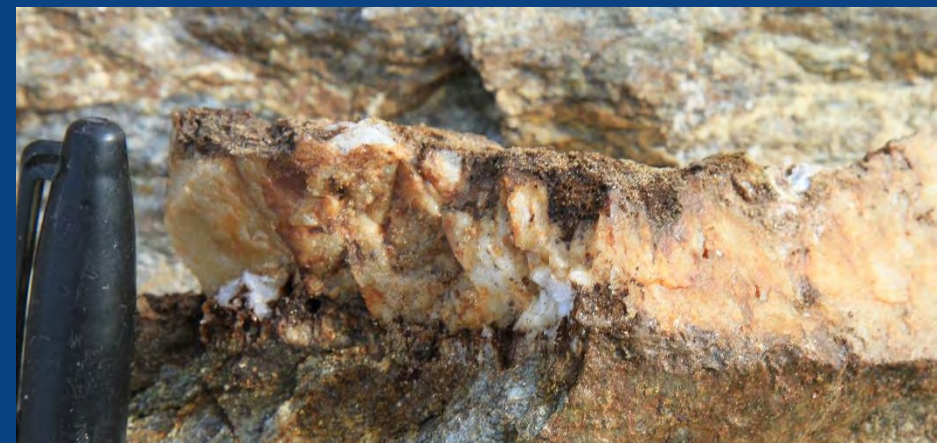
Coeval with Golden Saddle?

Similar structural situation, vein style, geochemistry.

2015 drilling is first to incorporate this thinking.

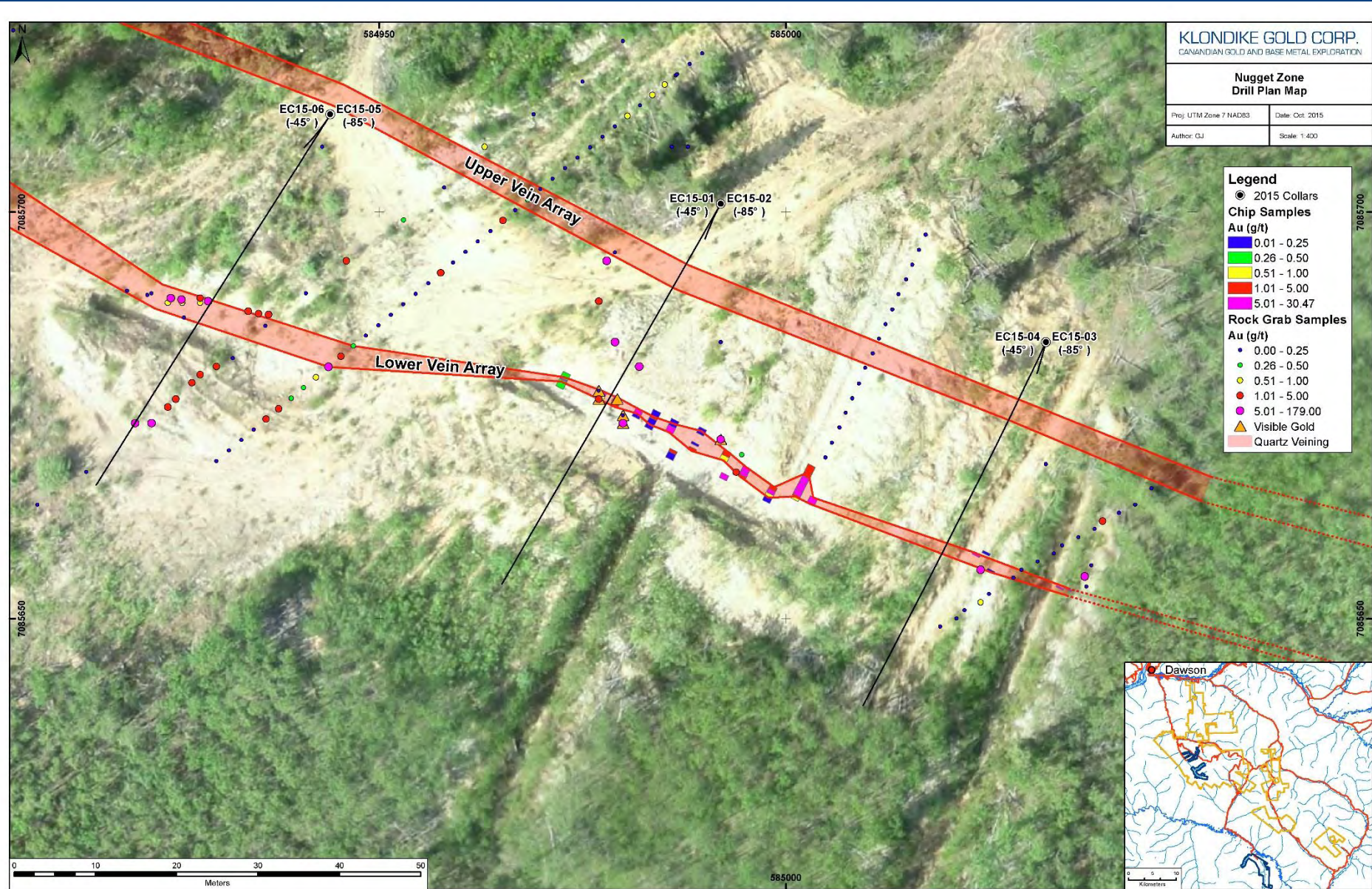
No widespread alteration yet, but structural corners untested.

Nugget Zone 2015: Gold Vein Array at Surface



Best chip sample line result: 5.0 g/t Au over 4.7 meters

Nugget Zone



Nugget Zone

MIDDLE DDH SECTION

Upper Vein Array

EC15-04: NSA

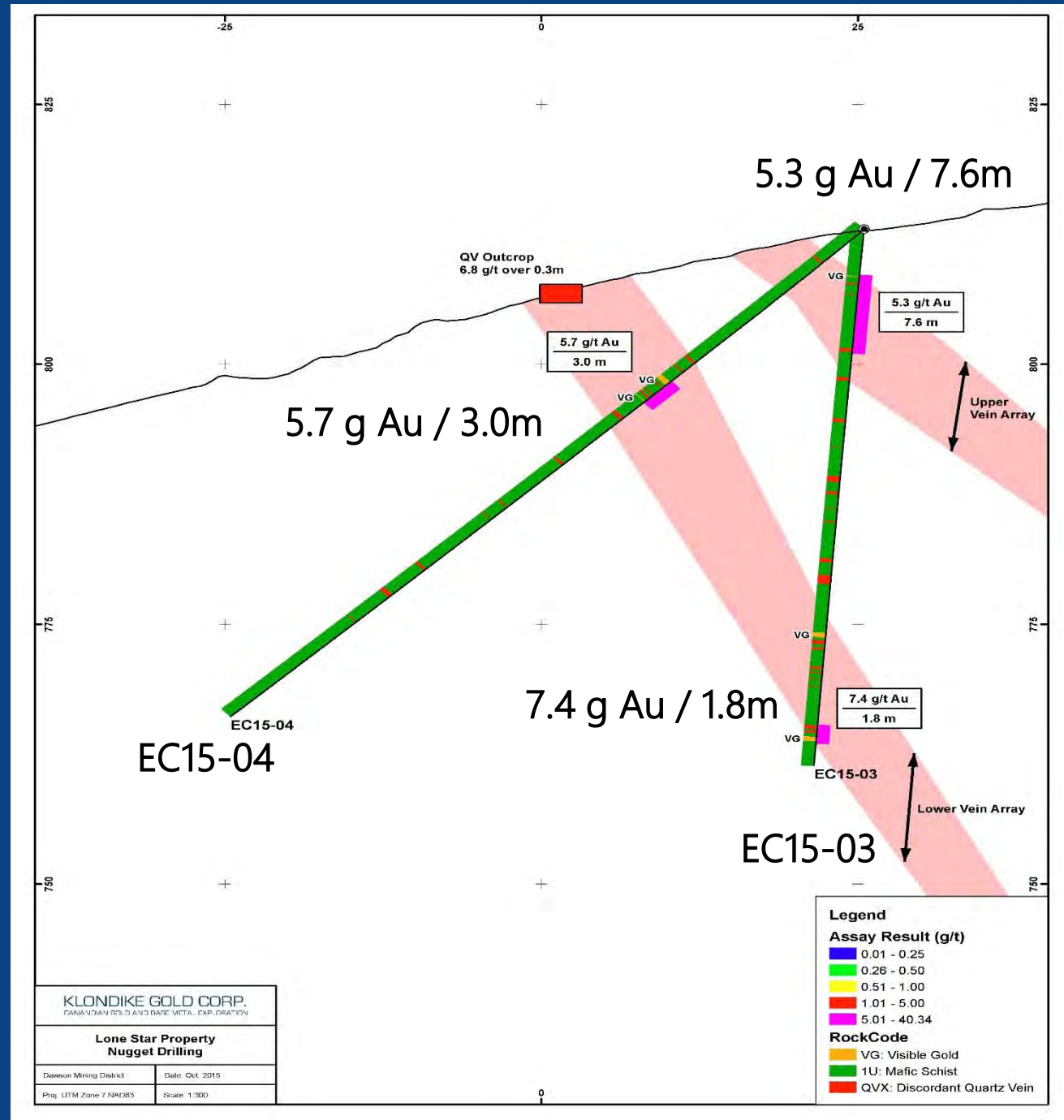
EC15-03: 5.3 g/t Au over 7.6 m

Lower Vein Array

Trench: 6.8 g/t Au over 0.3 m

EC15-04: 5.7 g/t Au over 3.0 m

EC15-03: 7.4 g/t Au over 1.8 m



2015 Drill Results: Nugget Vein Array

EC15-03:

4.4 to 12.0 m: 5.3 g/t Au over 7.6 m

22% total QV+altered



EC15-03	4.40	4.70	0.30	15.03
	4.70	5.10	0.40	0.01
	5.10	5.45	0.35	30.22
	5.45	6.20	0.75	0.33
	6.20	6.50	0.30	15.47
	6.50	7.50	1.00	0.04
	7.50	8.50	1.00	0.01
	8.50	9.50	1.00	0.02
	9.50	9.95	0.45	0.19
	9.95	10.20	0.25	37.86
	10.20	11.00	0.80	0.15
	11.00	11.50	0.50	0.06
	11.50	12.00	0.50	22.19

2015 Drill Results: Nugget Quartz Veins



EC15-01:
3.8 to 4.25 m: 40.34 g/t Au



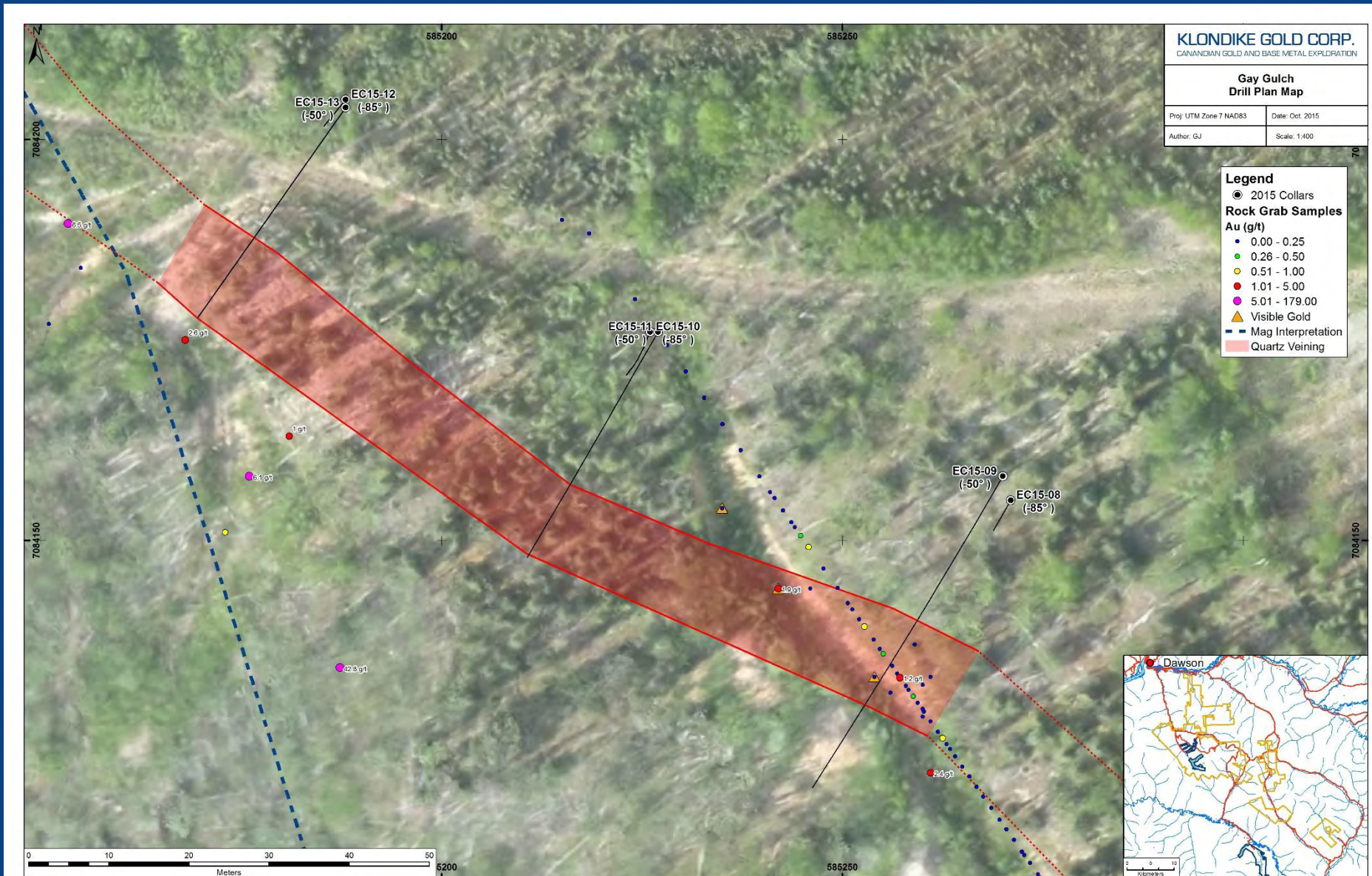
EC15-01:
5.35 to 6.00 m: 16.82 g/t Au

2015 Drill Results: Nugget Zone Summary



Hole ID	Dip	From (m)	To (m)	Interval (m)	True Thickness (m)	Grade Au g/t	% QV	Vein Array
EC15-01	-45	3.8	11.45	7.65	7.65	4.6	27	Upper
EC15-02	-85	4.4	11.6	7.2	5.7	2.3	15	Upper
EC15-03	-85	4.4	12.0	7.6	6.1	5.3	22	Upper
EC15-03	-85	47.8	49.6	1.8	1.4	7.4	27	Lower
EC15-04	-45	21.1	24.1	3.0	3.0	5.7	58	Lower

Gay Gulch Zone



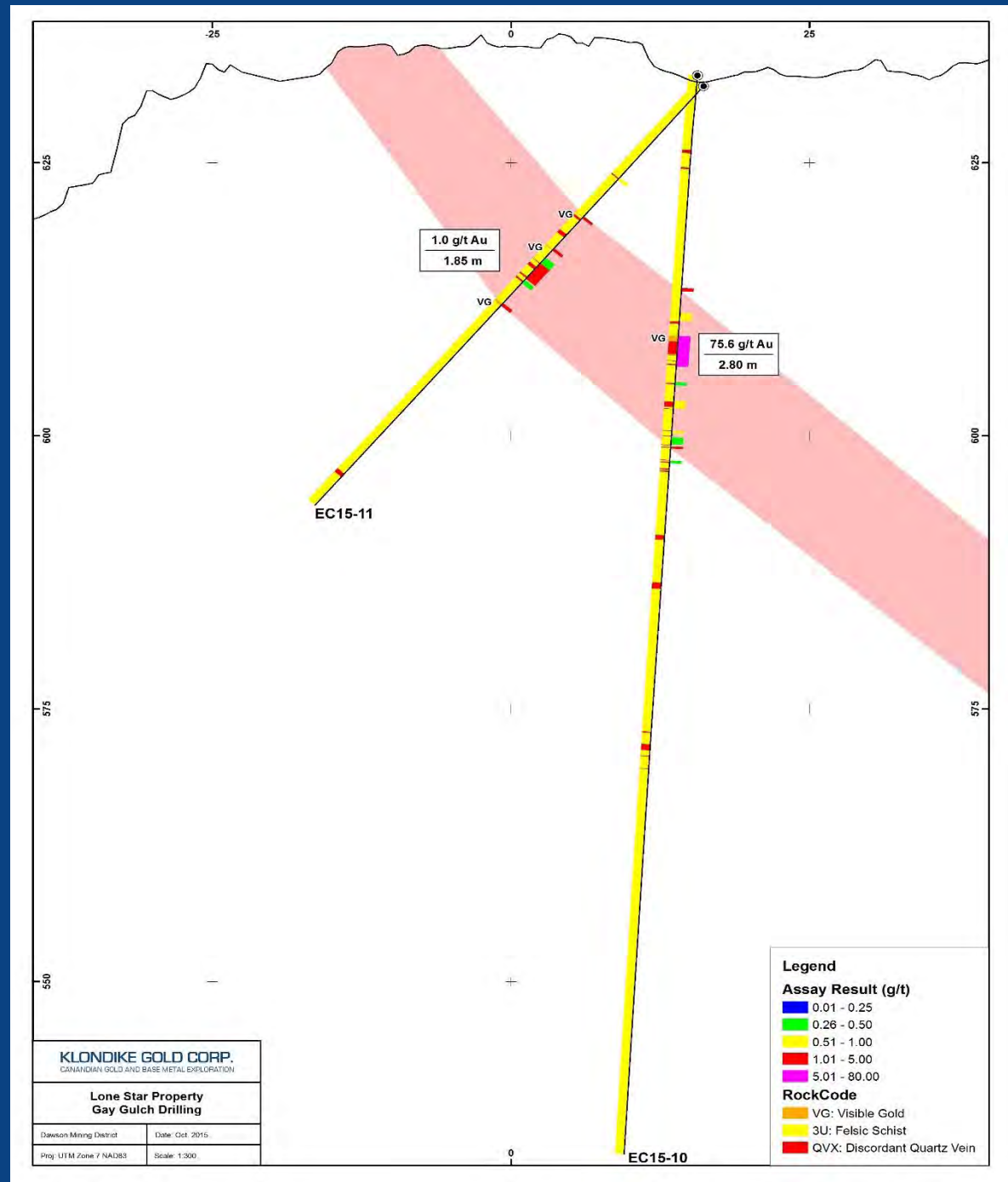
Gay Gulch Zone

MIDDLE DDH SECTION

Vein Array

EC15-11: 1.0 g/t Au over 1.85m
3 quartz veins with visible gold

EC15-10: 75.6 g/t Au over 2.80 m
Includes 420 g/t Au over 0.50 m
1 quartz vein with visible gold

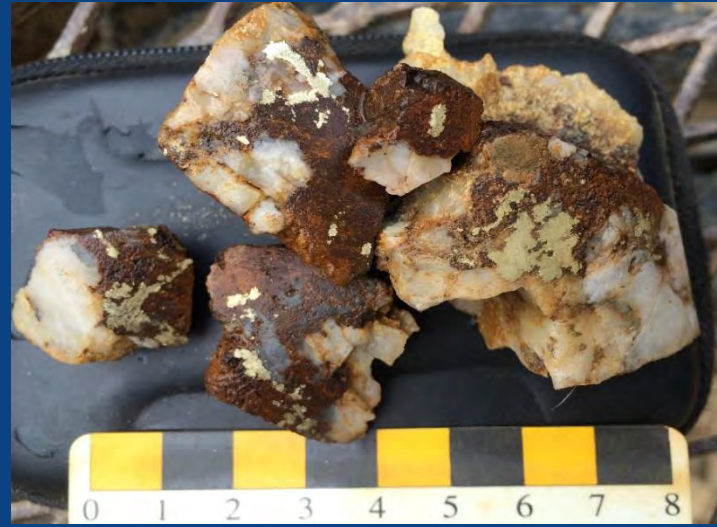
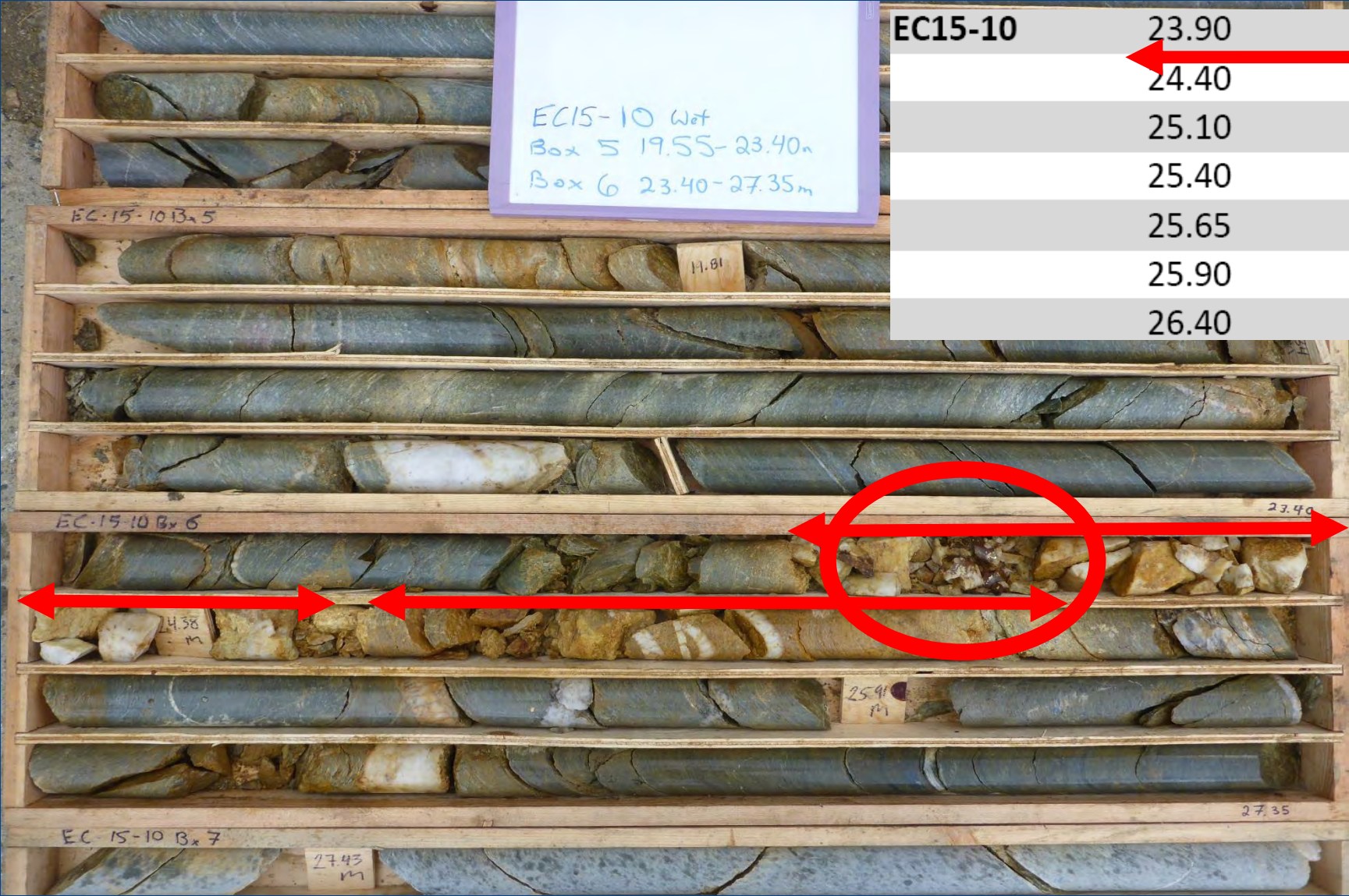


2015 Drill Results: Gay Gulch



EC15-10 Wet
 Box 5 19.55-23.40m
 Box 6 23.40-27.35m

EC15-10	23.90	24.40	0.50	419.91
	24.40	25.10	0.70	1.03
	25.10	25.40	0.30	0.50
	25.40	25.65	0.25	0.40
	25.65	25.90	0.25	0.25
	25.90	26.40	0.50	0.81
	26.40	26.70	0.30	0.79



2015 Drill Results: Gay Gulch Gold



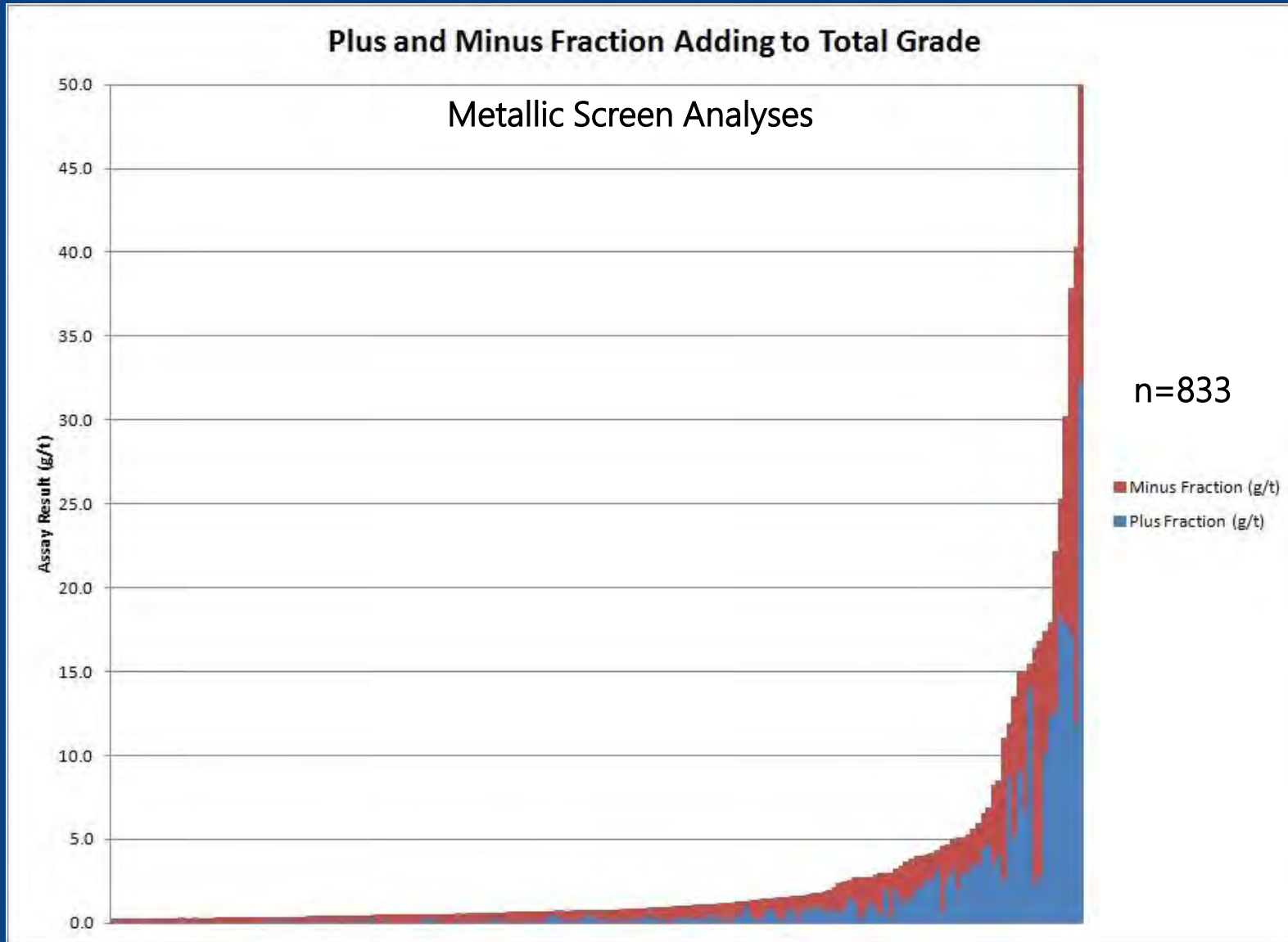
EC15-10: 23.9 to 24.4 m: 419.9 g/t Au

2015 Drill Results: Gay Gulch Summary



Hole ID	Dip	From (m)	To (m)	Interval (m)	True Thickness (m)	Grade Au g/t	% QV
EC15-08	-85	41.90	47.25	5.35	4.00	1.6	16
EC15-09	-50	19.30	20.40	1.10	1.10	1.9	18
EC15-10	-85	23.90	26.70	2.80	2.10	75.6	33
	Including	23.90	24.40	0.50	0.40	420.0	100
EC15-11	-50	21.20	23.05	1.85	1.85	1.0	
EC15-12	-85						
EC15-13	-50	19.45	21.00	1.55	1.55	10.9	10

Gold in Quartz Veining: Vein Character



Grains
0.3 - 3 mg / kg

Flakes, Nuggets
1 - 5 mg / kg

Clusters of Flakes, Nuggets
5 mg - 1000+ mg / kg

Vein Density is KEY Factor

Klondike Region Quartz Veins



Visible gold in bedrock veins:

Millimeter-size grains and flakes common. Centimeter-size coarse clots relatively common.



Vein Character:

Brittle, sometimes with brittle ductile character. Gold-bearing veins occur in arrays. Nugget effect, and clusters of nuggets are evident.



Mineral Associations:

Cubic pyrite, galena, chalcopyrite, carbonate (ankerite).

Chemical Associations:

Ag, Te, Pb, Bi, Sb, maybe As?

Host Rocks:

All lithologies do carry veins. Vein development depends heavily on local mechanical-rheologic conditions.

