

MODERN EXPLORATION OF HISTORIC YUKON GOLD FIELDS

Investment Overview



METALS
INVESTOR FORUM

January 2020 Vancouver

KG | TSX Venture Exchange
LBDP | Frankfurt Stock Exchange

Structural Evolution and Timing of Orogenic Gold Mineralization in the Klondike District, Yukon

Yukon Geoscience 2019 - PDF on KG website: Investors > "Technical Presentation"

Bedrock Gold Discoveries Explain Nearby Placer Deposits in the Klondike District, Yukon

*Yukon Placer Forum 2019 PDF on KG website: Investors > "Placer Forum Presentation"
and*

video <https://www.facebook.com/YukonGeologicalSurvey>

Drilling in the Klondike - 120 Years After Its World Famous Gold Rush

Pinnacle Digest 2019:

video <https://www.youtube.com/watch?v=yL5eUmVqJfM>

FORWARD LOOKING STATEMENTS



Statements contained in these following slides and accompanying oral presentation contain certain forward-looking statements within the meaning of the United States Private Securities Litigation Reform Act of 1995 and forward looking information within the meaning of the Securities Act (Ontario) and similar legislation in other jurisdictions. Forward-looking statements can be identified by the use of words such as “plans”, “expects” or “does not expect”, “is expected”, “budget”, “scheduled”, “estimates”, “forecasts”, “intends”, “anticipates” or “does not anticipate”, or “believes”, or variation of such words and phrases or state that certain actions, events or results “may”, “could”, “should”, “would”, “might” or “will” be taken, occur or be achieved. Forward-looking statements involve known and unknown risks, uncertainties and other factors which may cause the actual results, performance or achievements of Klondike Gold Corp. (“Klondike Gold”) to be materially different from any future results, performance or achievements expressed or implied by the forward-looking statements. These forward-looking statements include estimates, forecasts, and statements as to management’s expectations with respect to, among other things, business and financial prospects, growth potential, the size, quality and timing Klondike Gold’s exploration and possible development projects, mineral reserves and mineral resources, future trends, plans, strategies, objectives and expectations.

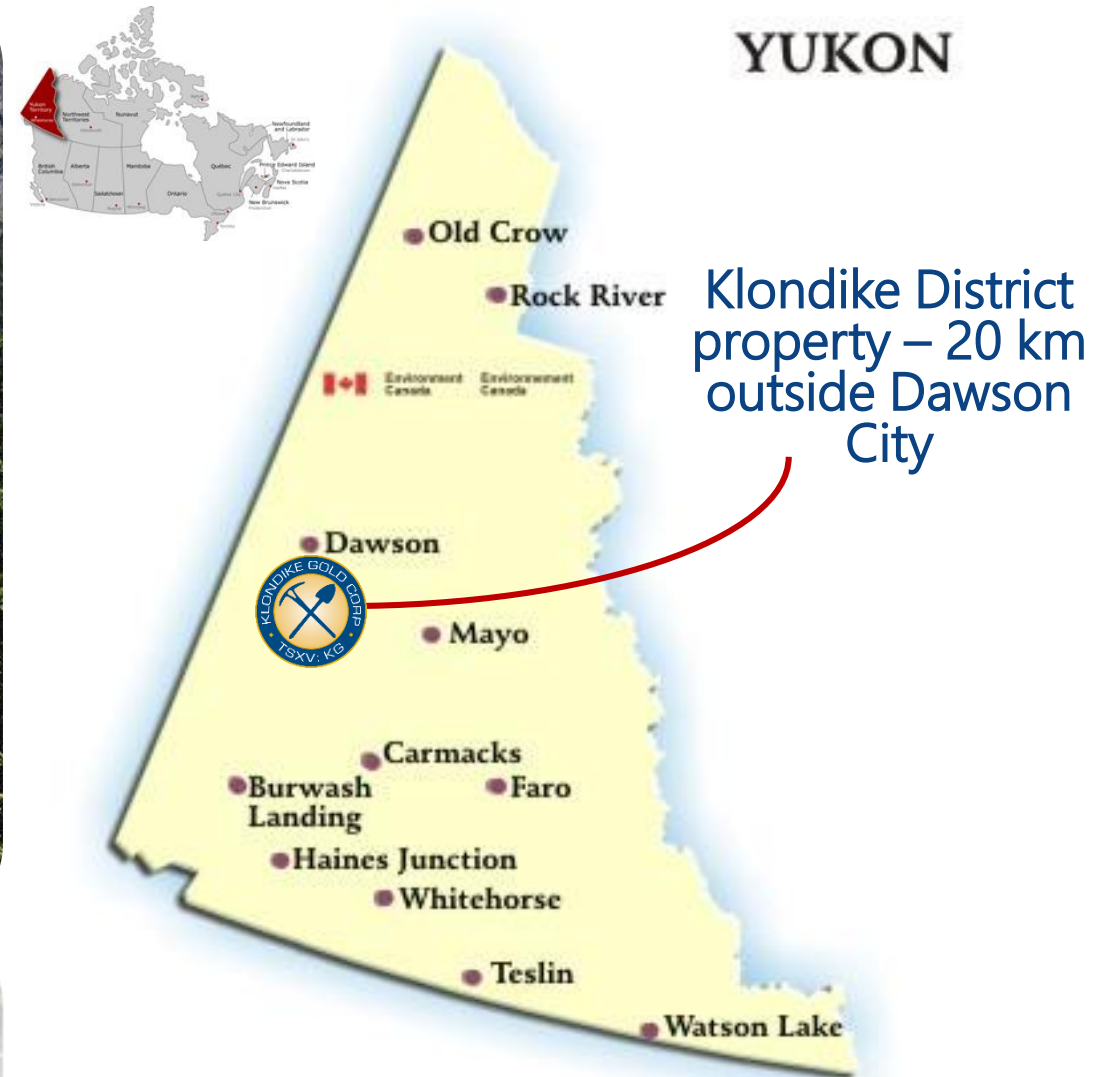
These forward-looking statements involve numerous assumptions, risks and uncertainties and actual results may vary materially. These statements are based on a number of assumptions, including, but not limited to, assumptions regarding general business and economic conditions, interest rates, the supply and demand for, inventories of, and the level and volatility of prices of gold, silver, zinc, lead, or copper, the availability of financing for Klondike Gold’s programs on reasonable terms, the accuracy of Klondike Gold’s resource estimates (including, with respect to size, grade and recoverability) and the geological, operational and price assumptions on which economic resource models are based, the resolution of environmental permitting and other proceedings, the capacity to obtain qualified personnel, consultants, and contractors and the future operational financial performance of the company generally. The foregoing list of assumptions is not exhaustive.

Events or circumstances could cause actual results to differ materially. Such events include, among others, unanticipated developments in business and economic conditions in the principal markets for commodities and/or financial instruments, changes in the supply, demand, and prices for metals and other commodities, the actual results of exploration activities, conclusions of economic evaluations, uncertainty in the estimation of ore reserves and mineral resources, changes in project parameters as plans continue to be refined, changes in economic and political stability in jurisdictions where Klondike Gold has business interests, environmental risks and hazards, legal disputes, increased infrastructure and/or operating costs, labour and employment matters, and government regulation as well as those factors discussed in the section entitled “Risk Factors” in Klondike Gold’s Annual and Quarterly Reports and associated financial statements, Management Information Circulars and other disclosure documents filed with Canadian securities regulators. Although Klondike Gold has attempted to identify important factors that could cause actual results to differ materially, there may be other factors that cause results not to be as anticipated, estimated or intended. There can be no assurance that such statements will prove to be accurate as actual results and future events could differ materially from those anticipated in such statements. Klondike Gold disclaims any intention or obligation to update or revise any forward-looking statements, whether as a results of new information, future events or otherwise. Accordingly readers/listeners should not place undue reliance on forward-looking statements.

GOLD EXPLORATION COMPANY: YUKON CANADA



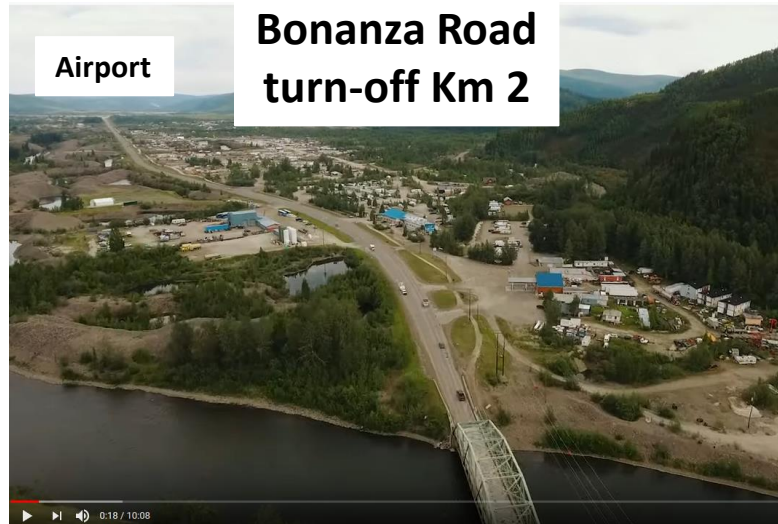
Dawson City, YT.
Tr'ondëk Hwëch'in First Nation Territory.



INFRASTRUCTURE: ECONOMIC ADVANTAGE



Dawson Km 0



Airport

**Bonanza Road
turn-off Km 2**



Bonanza Road Km 7



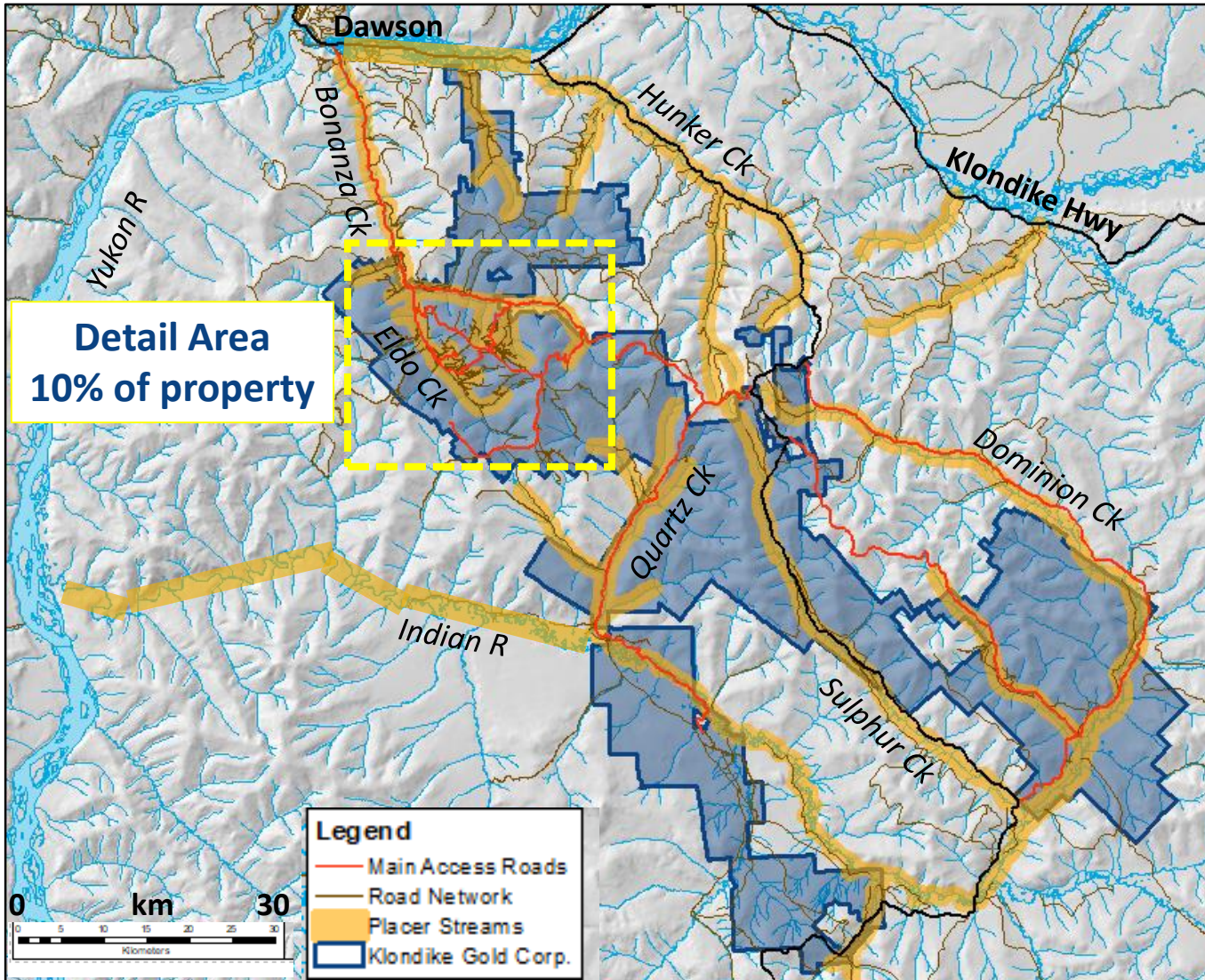
Eldorado Road Km 20



Stander Zone Km 25

Pinnacle Digest 2019
Podcast video
screencaps

KLONDIKE PLACER DISTRICT: WORLD CLASS



Klondike Claims ~600 sq km
Covers the entire Klondike Placer District

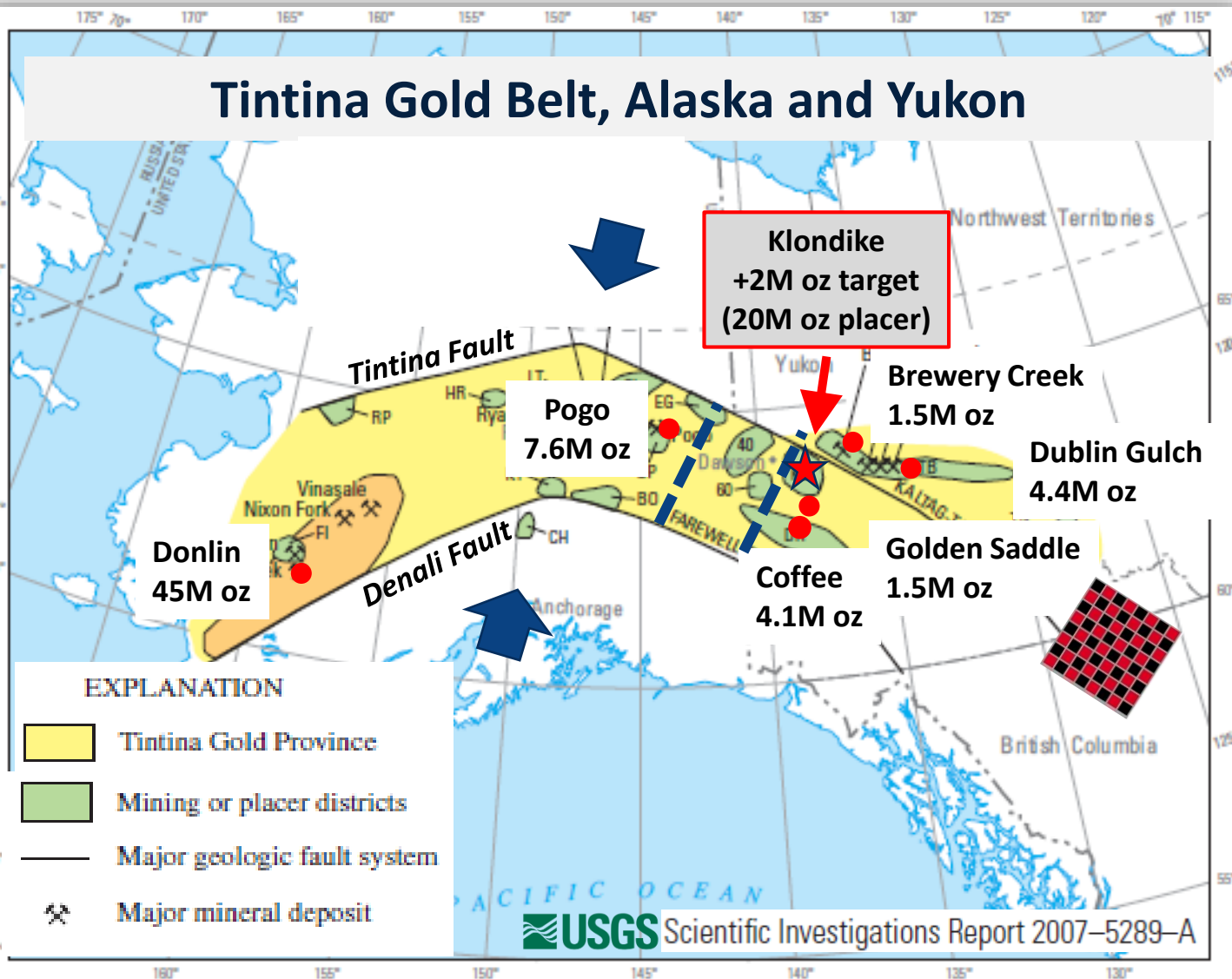
- Placer gold mined 1896 to present
- ~20 M oz Au recovered
- “World Class” endowment

... BUT (in 2014) ...

KLONDIKE NEIGHBOURHOOD: WORLD CLASS



Tintina Gold Belt, Alaska and Yukon



- TGB is known to host **“World-Class”** Cretaceous age (~100 Ma) gold deposits.
- Flexure in crustal scale 1st order faults create “world-class” deposit environment by creating the fault network (gold conduits) to host them.
- **Until now Klondike was dated as Jurassic (160 Ma), and no faults were recognized.** (No faults, bad age for gold, therefore low potential – which we now know is wrong.)

Figure Note: Gold resource endowment is sourced from company disclosures or government sources, for comparative purposes only.

DISTRICT SCALE SURVEYS:

- Mapping / Soils / Magnetism / Radiometrics / VLF-EM / Structural Mapping / LIDAR / Orthophotography / Historical compilation

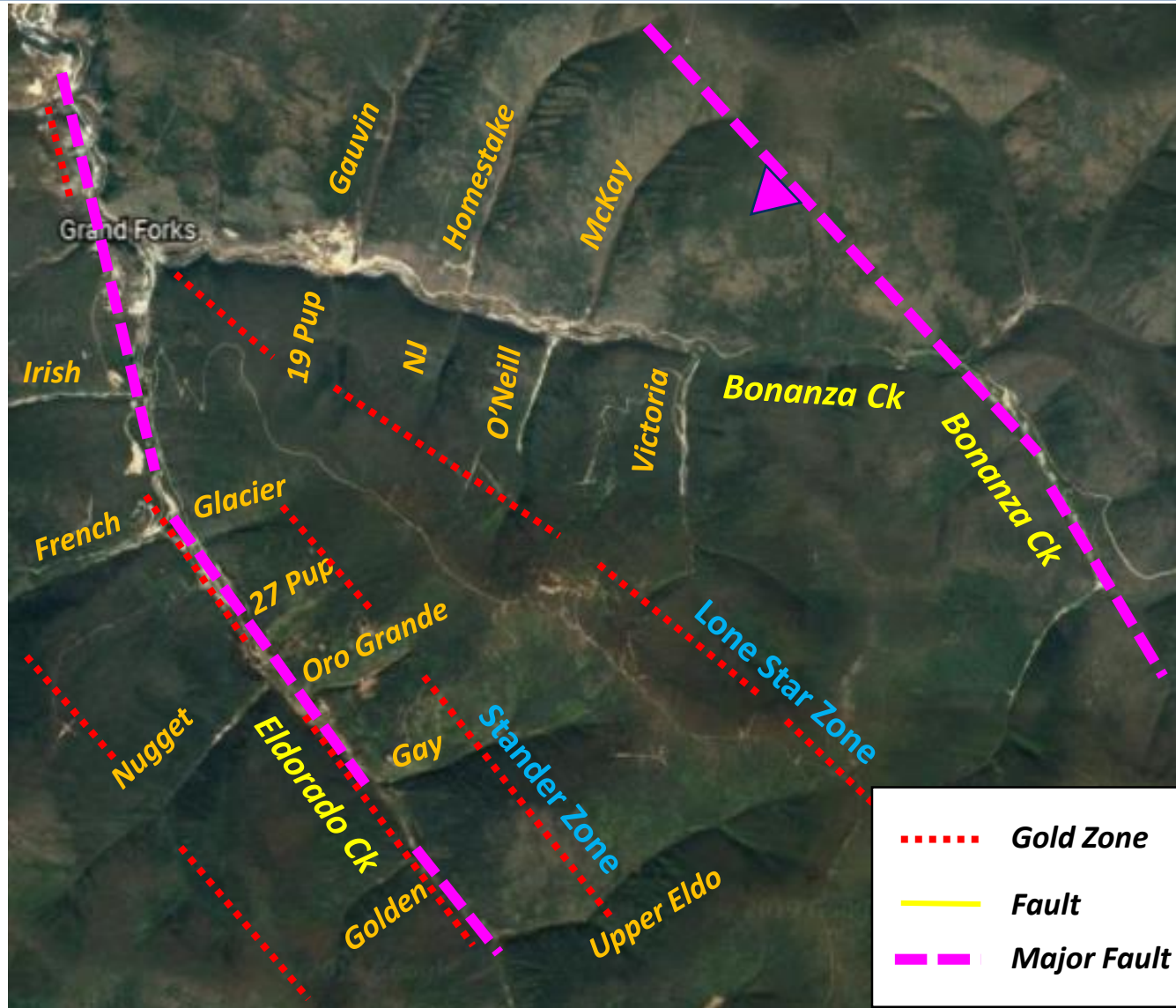
LOCAL SCALE SURVEYS:

- **Diamond drilling 33,500m** / Trenching / Channel sampling / Whole Rock / GT-Probe

SYSTEMATIC PROCEDURES:

- Metallic screen assay, ultra-trace analyses, digital field (QGIS) and digital core (MXDeposit) logging, oriented core drilling

FAULTS CREATE LANDSCAPE: D3 CREEKS



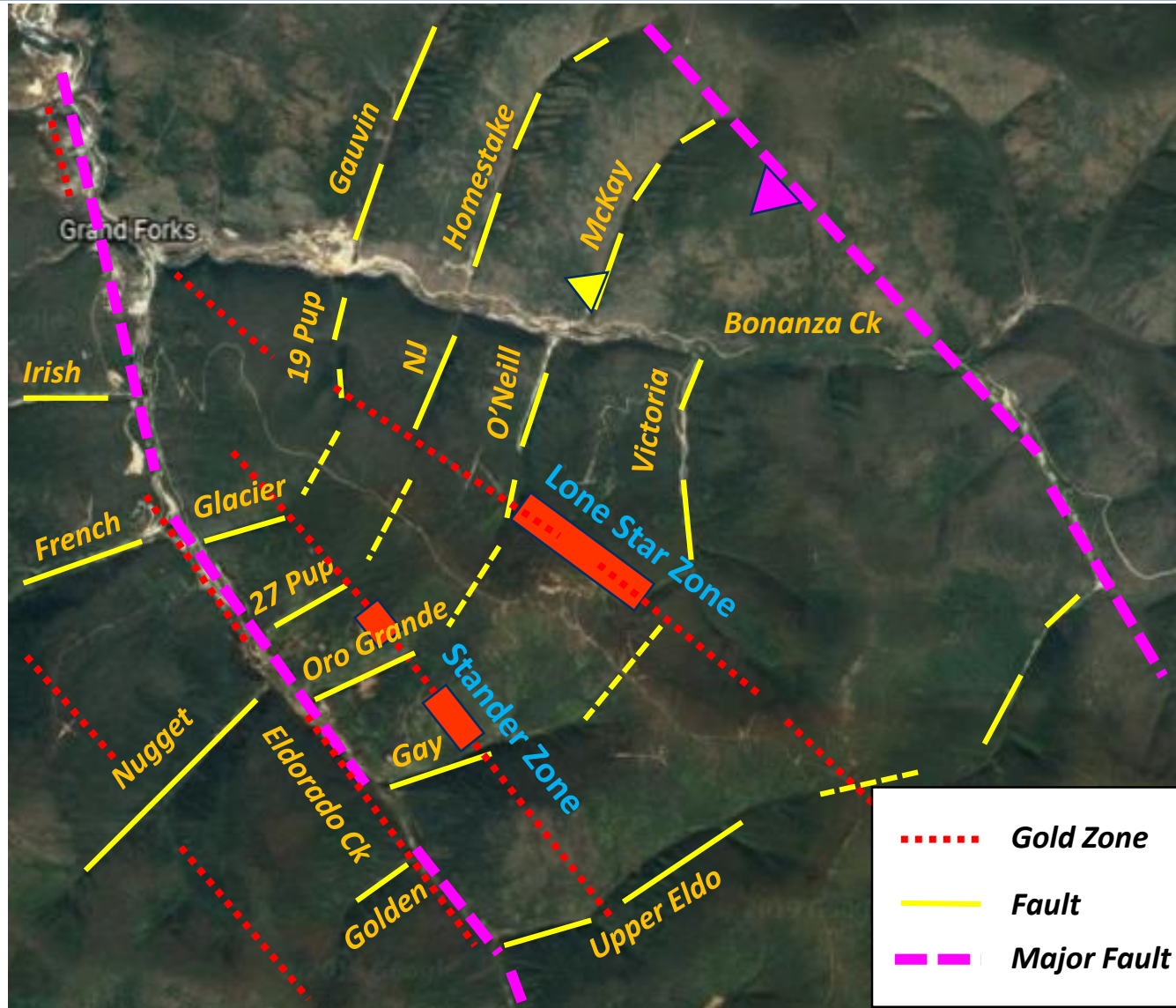
Faults created the Klondike 'sluice box riffle' Creeks and Gulches.

Zones of surface fault 'weakness' funnels draining water, causes differential erosion, locating creeks.

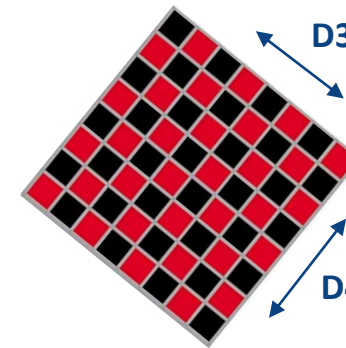
- Major NW thrust faults are the Creeks (D3 / c. 180 Ma)
- Secondary NE faults are the Gulches (D4 / c. 100 Ma)

Both fault directions are gold bearing in bedrock.

FAULTS CREATE LANDSCAPE: D3 AND D4



Faults created the Klondike 'sluice box riffle' Creeks and Gulches.

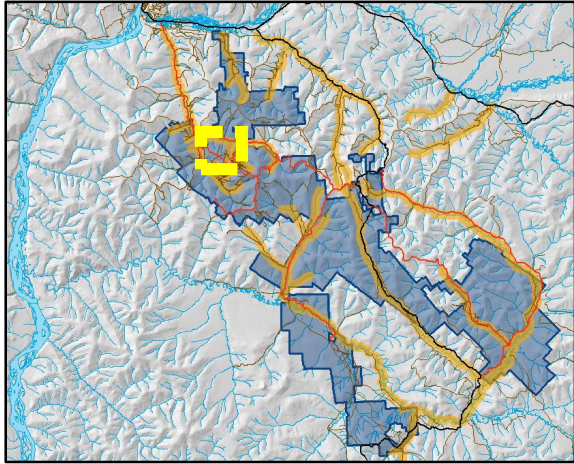


Checkerboard pattern

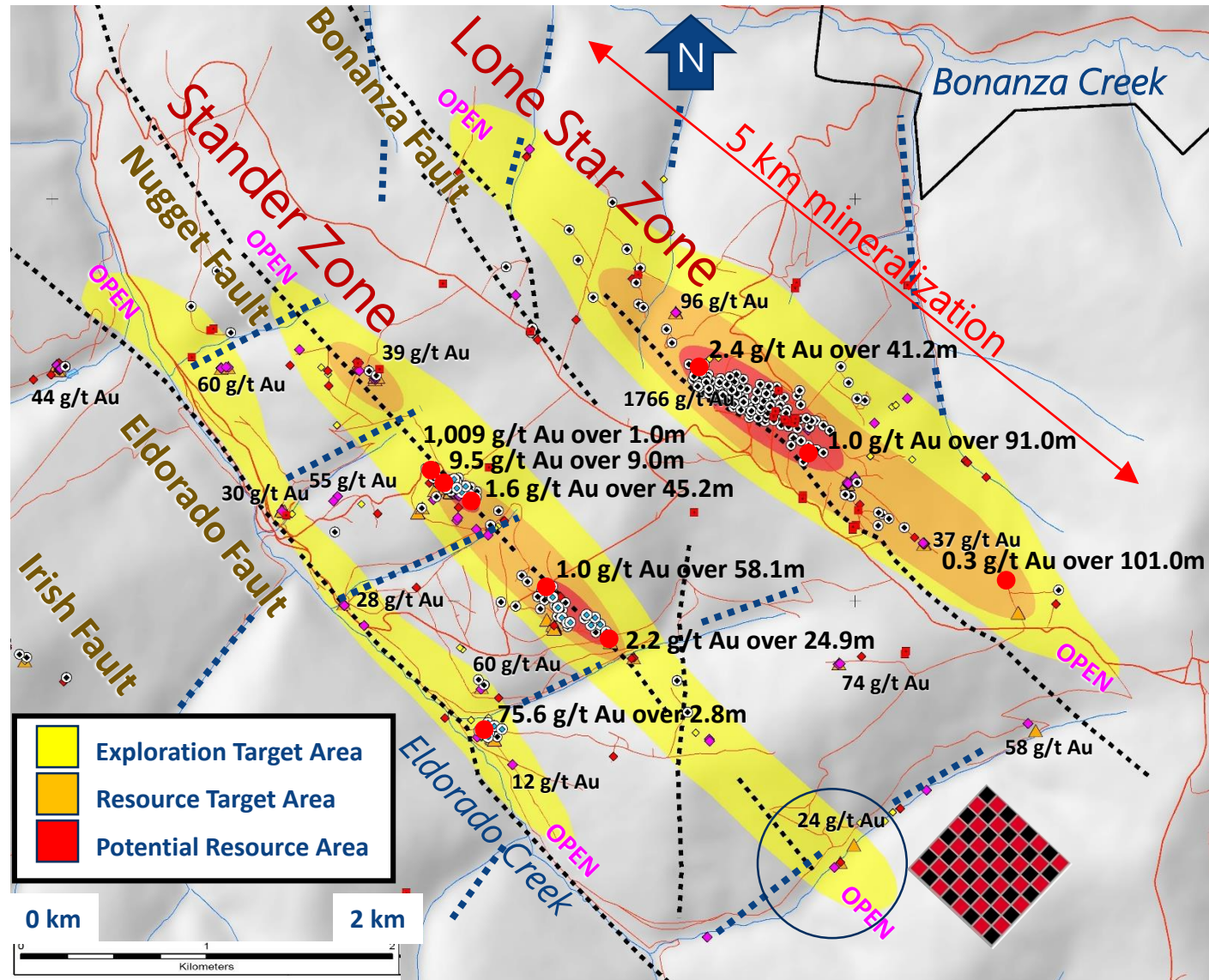
- Major NW thrust faults are the Creeks (D3 / c. 180 Ma)
- Secondary NE faults are the Gulches (D4 / c. 100 Ma)

Both fault directions are gold bearing in bedrock.

DISCOVERY ...



Fraction of property explored: ~10%
Yellow box to scale



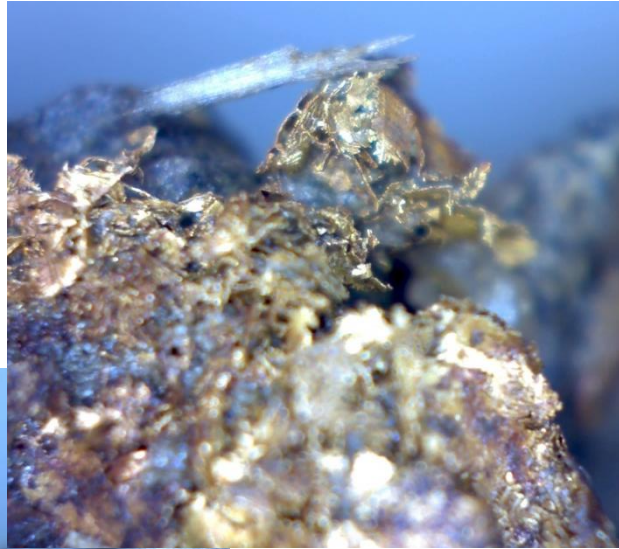
Multi-million ounce gold potential.

+2M oz gold threshold objective before resource estimate

Estimate/guess minimum 100,000 meters drilling required.

Currently 34,000 meters completed.

D4: STANDER ZONE GOLD/ELECTRUM



Electrum D4 Vein:

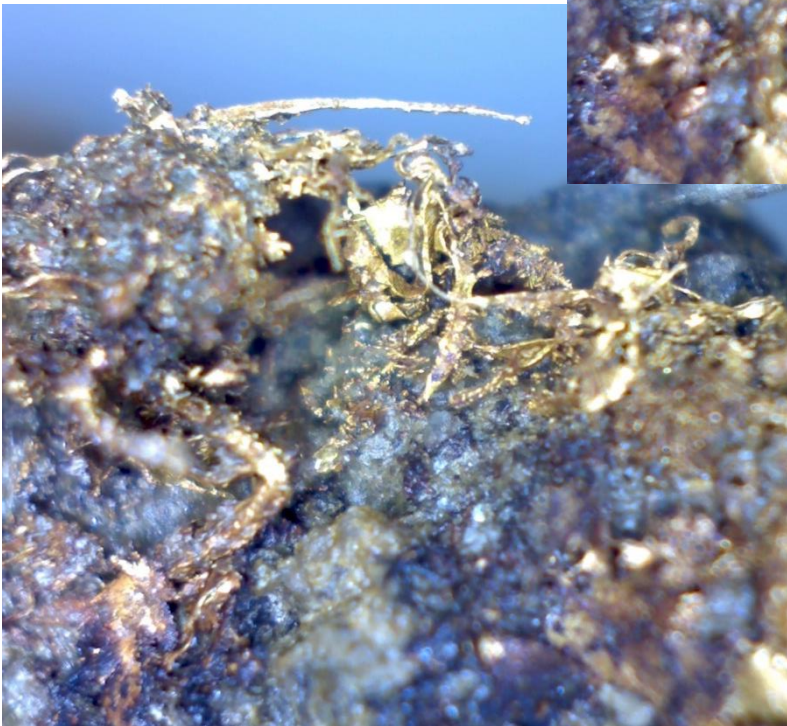
1,009 g/t Au with 1,036 g/t Ag over 1.0m

“World class drill hole”.

2nd best hole drilled in the world in August.

3rd best drill hole in Canada in 2019.

(Source: Mining Intelligence / Mining.com)



STANDER ZONE GOLD: OUTCROP TO PLACER



Placer nuggets of gold from 1 km downstream of outcrop (photo above).

Outcrop nugget of gold in Upper Eldorado Creek (photo below).



"KG" 5-YEAR PRICE / VOLUME CHART



5-Year trend of increasing
 market capitalization:
 \$3M to \$30M

"Past performance is no guarantee of future returns"

6-Year Capital: \$15.7 M
 33,500 m drilled / 340 holes

Year	Amount Raised	# Drill	Meters	Ave Depth
2014	\$ 2,530,000.00	-	-	-
2015	\$ 416,500.00	19	1,369.30	72.07
2016	\$ 2,870,000.00	71	5,375.17	75.71
2017	\$ 7,000,000.00	79	8,620.62	123.15
2018	\$ -	87	9,511.93	109.33
2019	\$ 2,875,886.00	84	8,628.37	91.79
TOTAL	\$ 15,692,386.00	340	33,505.39	

INVESTOR INFORMATION



Capital Structure

As of January 2020

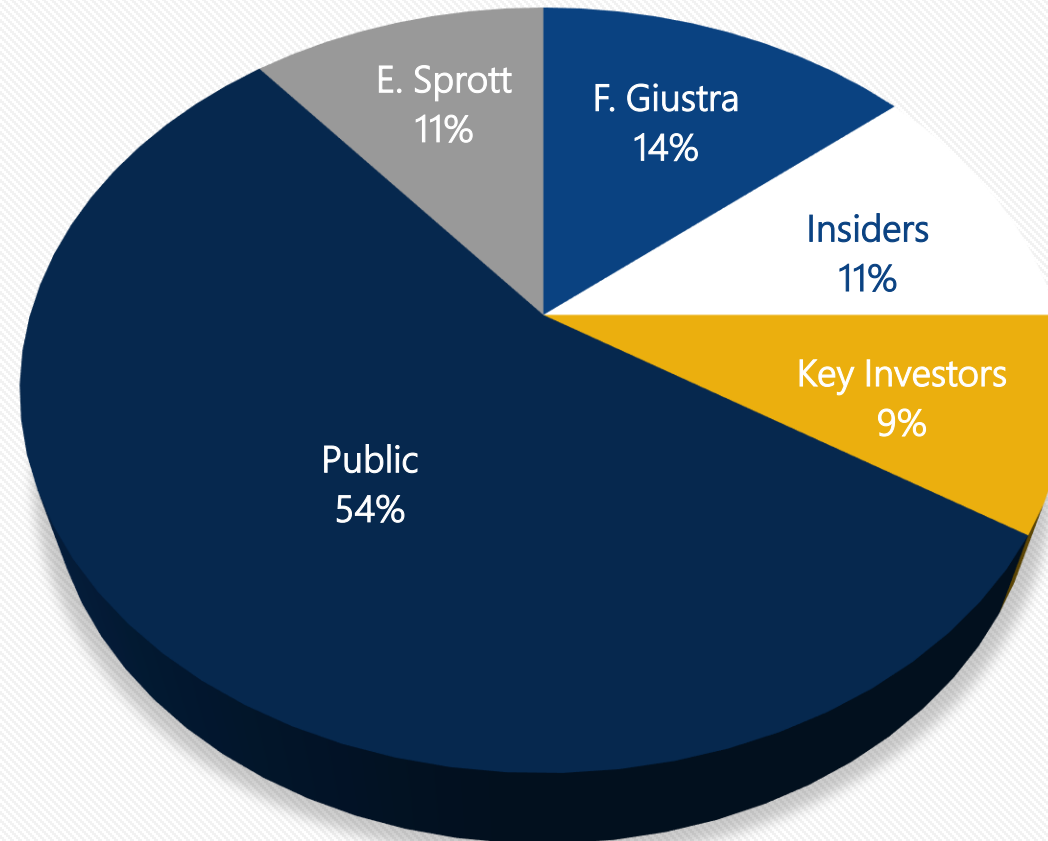
Shares Issued | 113 M

Market Cap | \$33 M

Total Diluted Shares | 143 M

- Options (WAP - \$0.24) | 10.1 M
- Warrants (WAP - \$0.35) | 20.6 M

Shareholder Structure



46% of Shares Held by Top 20 Shareholders

\$0.8 M Cash
On Hand

\$7.2 M
Warrants

\$TBD
2020 Budget

INVESTMENT HIGHLIGHTS



Multi-million ounce potential
with 3 year timeline



Attempting to time delivery of
this potential with a gold market

THANK YOU



2833 – 595 Burrard St.
Vancouver BC, V7X 1J1

www.klondikegoldcorp.com
info@klondikegoldcorp.com
(604) 559 4440

