

MODERN EXPLORATION OF HISTORIC YUKON GOLD FIELDS

Corporate
Presentation



May 2018

KG | TSX Venture Exchange

LGBF | Frankfurt Stock Exchange

FORWARD LOOKING STATEMENTS



Statements contained in these following slides and accompanying oral presentation contain certain forward-looking statements within the meaning of the United States Private Securities Litigation Reform Act of 1995 and forward looking information within the meaning of the Securities Act (Ontario) and similar legislation in other jurisdictions. Forward-looking statements can be identified by the use of words such as “plans”, “expects” or “does not expect”, “is expected”, “budget”, “scheduled”, “estimates”, “forecasts”, “intends”, “anticipates” or “does not anticipate”, or “believes”, or variation of such words and phrases or state that certain actions, events or results “may”, “could”, “should”, “would”, “might” or “will” be taken, occur or be achieved. Forward-looking statements involve known and unknown risks, uncertainties and other factors which may cause the actual results, performance or achievements of Klondike Gold Corp. (“Klondike Gold”) to be materially different from any future results, performance or achievements expressed or implied by the forward-looking statements. These forward-looking statements include estimates, forecasts, and statements as to management’s expectations with respect to, among other things, business and financial prospects, growth potential, the size, quality and timing Klondike Gold’s exploration and possible development projects, mineral reserves and mineral resources, future trends, plans, strategies, objectives and expectations.

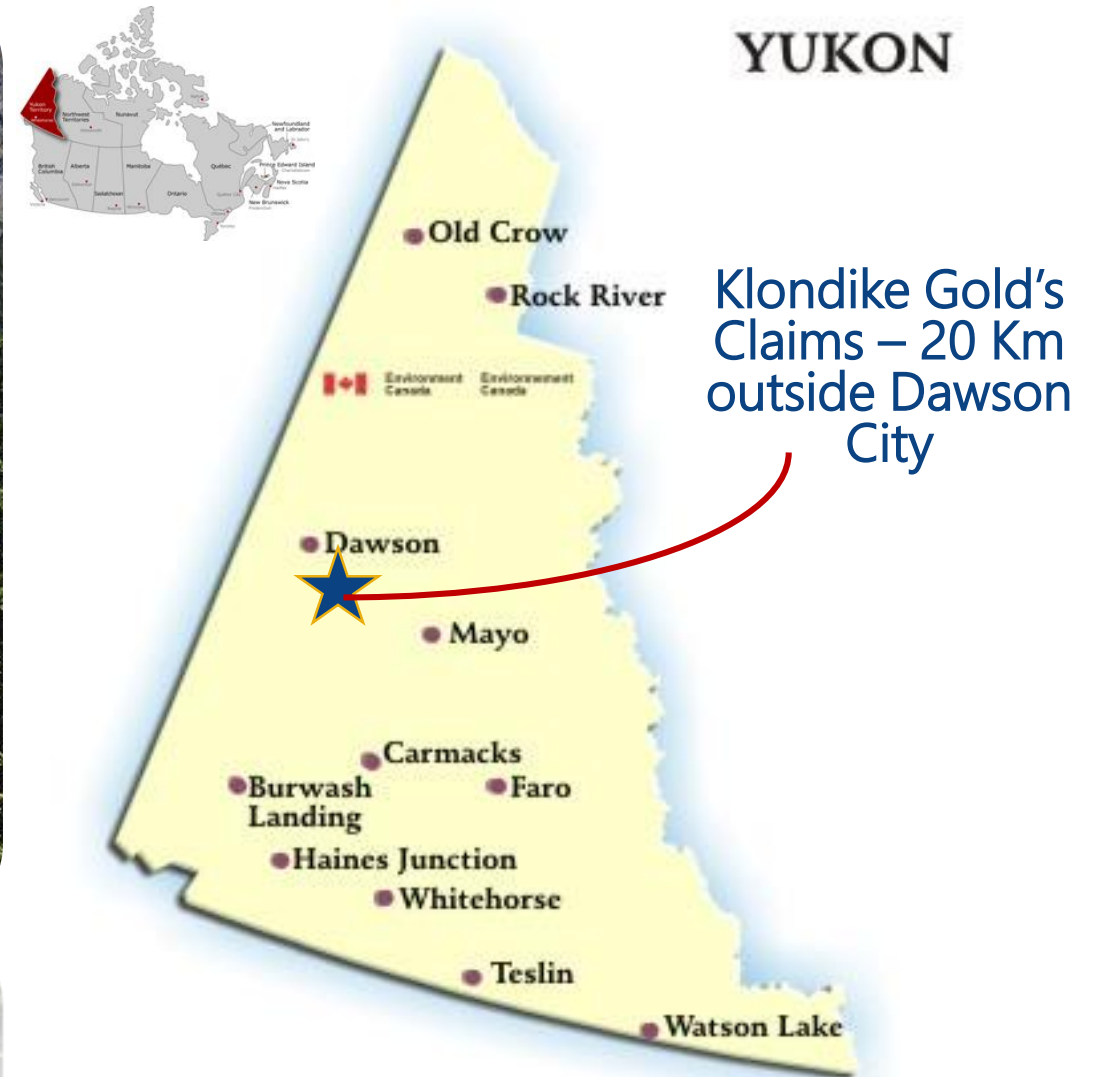
These forward-looking statements involve numerous assumptions, risks and uncertainties and actual results may vary materially. These statements are based on a number of assumptions, including, but not limited to, assumptions regarding general business and economic conditions, interest rates, the supply and demand for, inventories of, and the level and volatility of prices of gold, silver, zinc, lead, or copper, the availability of financing for Klondike Gold’s programs on reasonable terms, the accuracy of Klondike Gold’s resource estimates (including, with respect to size, grade and recoverability) and the geological, operational and price assumptions on which economic resource models are based, the resolution of environmental permitting and other proceedings, the capacity to obtain qualified personnel, consultants, and contractors and the future operational financial performance of the company generally. The foregoing list of assumptions is not exhaustive.

Events or circumstances could cause actual results to differ materially. Such events include, among others, unanticipated developments in business and economic conditions in the principal markets for commodities and/or financial instruments, changes in the supply, demand, and prices for metals and other commodities, the actual results of exploration activities, conclusions of economic evaluations, uncertainty in the estimation of ore reserves and mineral resources, changes in project parameters as plans continue to be refined, changes in economic and political stability in jurisdictions where Klondike Gold has business interests, environmental risks and hazards, legal disputes, increased infrastructure and/or operating costs, labour and employment matters, and government regulation as well as those factors discussed in the section entitled “Risk Factors” in Klondike Gold’s Annual and Quarterly Reports and associated financial statements, Management Information Circulars and other disclosure documents filed with Canadian securities regulators. Although Klondike Gold has attempted to identify important factors that could cause actual results to differ materially, there may be other factors that cause results not to be as anticipated, estimated or intended. There can be no assurance that such statements will prove to be accurate as actual results and future events could differ materially from those anticipated in such statements. Klondike Gold disclaims any intention or obligation to update or revise any forward-looking statements, whether as a results of new information, future events or otherwise. Accordingly readers/listeners should not place undue reliance on forward-looking statements.

A GREENFIELD GOLD EXPLORATION COMPANY



Dawson City, YT.
Tr'ondëk Hwëch'in First Nation Territory.



HIGHLIGHTS



\$1 billion industry investment in Yukon in the past 10 years

Orogenic gold model sought after by majors

Financially backed and fully funded through 2018 & 2019

Excellent property infrastructure and proximity to Dawson

Multiple, parallel, lengthy 'high priority' target areas

Multiple target styles: disseminated low grade to vein high grade

INVESTOR INFORMATION



Capital Structure

As of May 2018

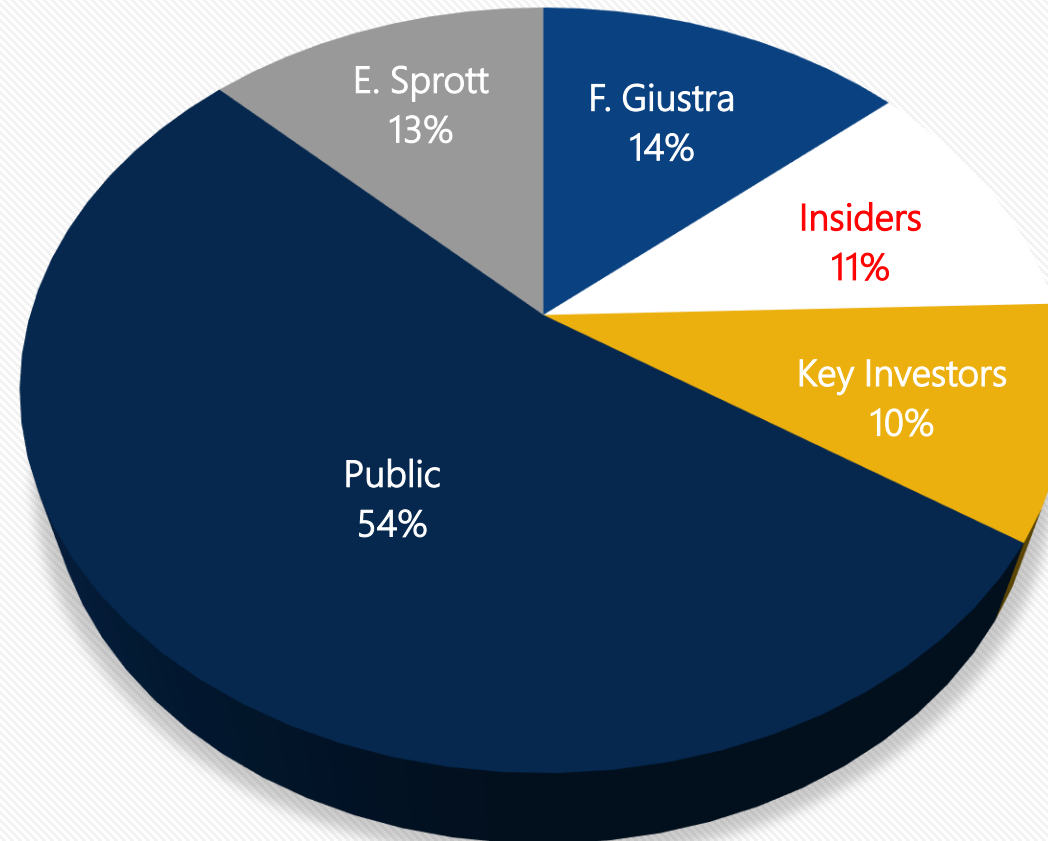
Shares Issued | 95 M

Market Cap | \$32 M

Total Diluted Shares | 120 M

- Options (WAP - \$0.20) | 6.5 M
- Warrants (WAP - \$0.28) | 20.1 M

Shareholder Structure



56% of Shares Held by Top 15 Shareholders

\$6.5 M Cash
On Hand

\$7.4 M
Warrants

\$2.1 M Flow
Through; 2018

KLONDIKE GOLD MANAGEMENT



Peter Tallman – President & CEO

- Professional Geologist
- 35 years experience in the mining industry
- Grassroots discovery & delineation of three mineral deposits.
- Director



Jessica Van Den Akker – CFO

- Chartered Professional Accountant (CA)
- 11 years experience in the mining sector



Melinda Coghill – CS

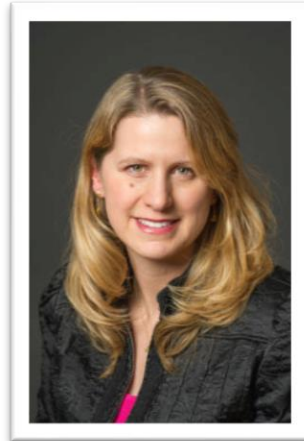
- Corporate Secretary with extensive knowledge of Yukon legislation
- 20 years experience in the mining sector

BOARD OF DIRECTORS



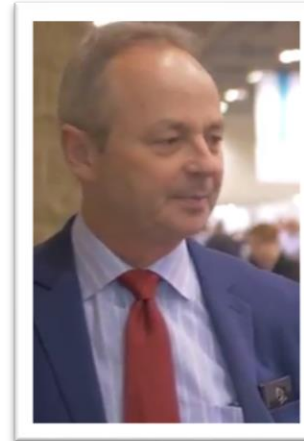
Gordon Keep

- 31 years experience in corporate finance
- CEO of Fiore Management & Advisory Group
- Professional Geologist



Tara Christie

- 25 years of experience in the mining industry
- President & CEO of Banyan Gold Corp.
- Director of the Prospector & Developers Association of Canada



Steve Brunelle

- 30 years of exploration & management experience
- President & CEO of Amerix Precious Metals Corp.
- Developed two discoveries



John Pallot

- 32 years telecommunications experience
- Executive Officer and/or Director of resource issuers 1993 (former CEO of Windarra Minerals)

RECENT MINING INVESTMENT IN YUKON



\$1 billion
invested
in Yukon.

90%
invested
in gold.

4/5 top
gold
producers



GOLDCORP



COEUR MINING™



AGNICO EAGLE

McEwen Mining
NYSE MUX TSX

KINROSS

NEWMONT

BARRICK

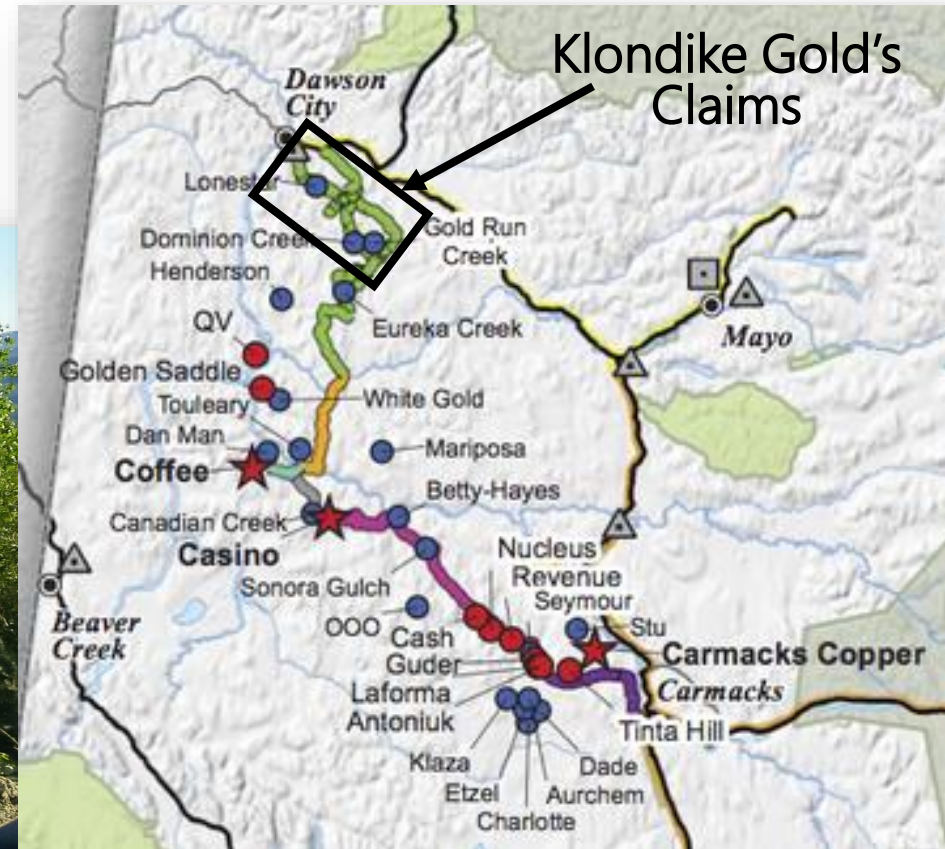
BARCLAYS

"ROADS TO RESOURCES" – YT INFRASTRUCTURE

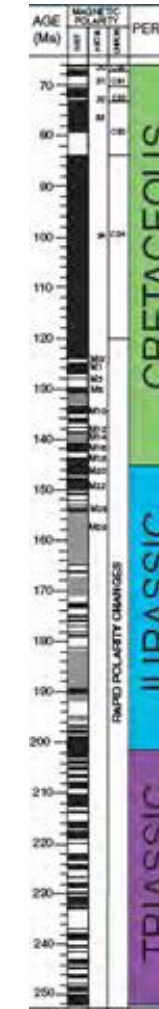


- \$360 million committed by Canada/Yukon governments
- Over 700km of road reconstruction
- 'Goldfield Roads' network runs throughout KG claims
- Showcases Yukon's commitment to the mining industry

Map of Roads to Resources Project, showcasing reconstruction of both the Goldfield and Indian River roads through KG's claims.



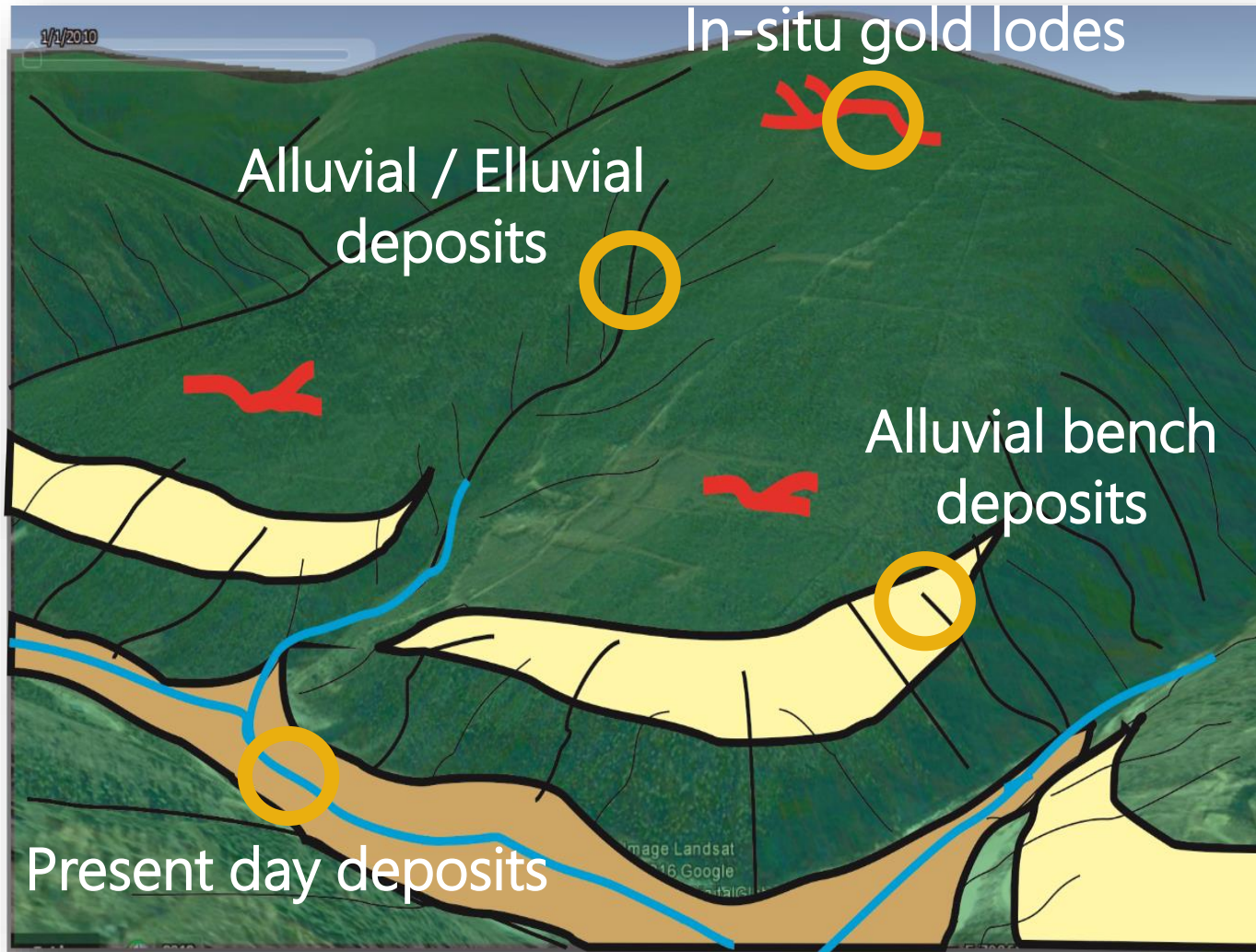
KLONDIKE REGION GEOLOGICAL OVERVIEW



- 75 Ma** ← Au Intrusions:
Coffee 5.2M oz Au
Donlin Creek 37M oz Au
- 100 Ma** ← Au Intrusions or Au-QVs:
Fort Knox 4M oz Au
Pogo 6M oz Au
- 150 Ma** ← Orogenic Au-QV's:
Klondike 20M oz Au placer
Golden Saddle 1.6M oz Au
California MotherLode :
40M oz placer / 200M oz Au

Similar geology as the
California Motherlode
Belt (220 million oz Au
discovered)

KLONDIKE HISTORIC PRODUCTION: 20 M Oz Au

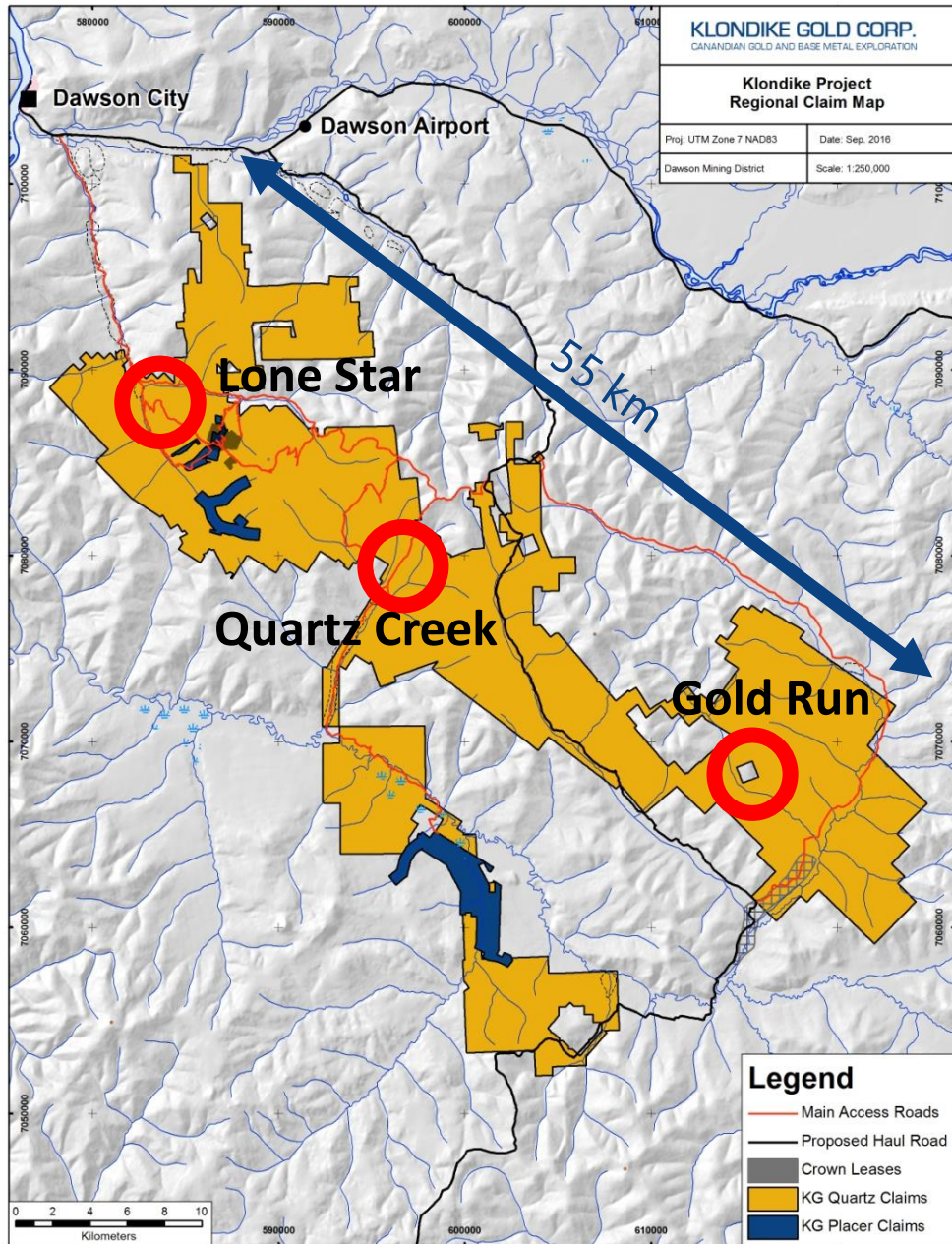


Klondike District³

- Placer gold mined (1896-2016):
- 20 million ounces gold in gravels
- Bedrock gold mined (1906-1910):
- 1,200 bedrock gold ounces from bedrock

California Motherlode⁴

- Placer gold mined (1848-2016):
- 40 million ounces gold in gravels
- Bedrock gold mined (1860-2016):
- 220 million gold ounces from bedrock



KLONDIKE GOLD PROPERTY

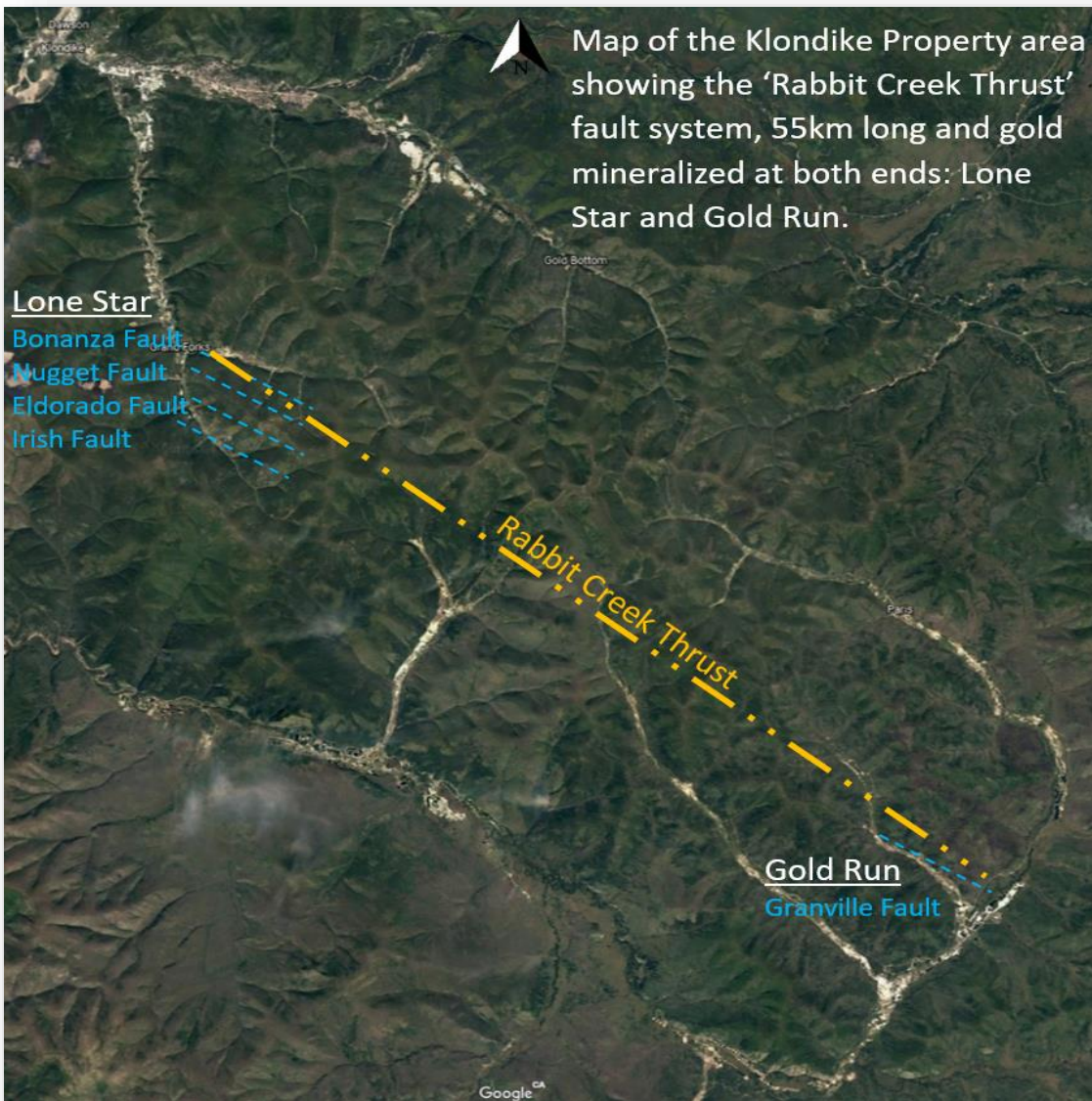
- 2,942 contiguous claims totaling 557 sq. kms – 100% ownership
- Stable, top-ranked policy jurisdiction.
- Tr'ondëk Hwëch'in First Nation settled land claims; 1998 Final Agreement
- Claims accessible via government maintained road network
- Electrical infrastructure.
- Proximity to Dawson Airport
- Inexpensive exploration.



KG PROGRAMS 2015 - 2018



INTERPRETATION OF RESULTS 2015 - 2017



- Widespread Au in bedrock with interesting quantity throughout property
- Disseminated Au model in wide widths in an orogenic style gold system
- Identified key structures believed to be the bedrock sources for Au mined during the Klondike Gold Rush demonstrating potential for multiple new discoveries
- Gold mineralization at Gold Run in same position as at Lone Star: directly above 'Rabbit Creek Thrust'.
- Multiple D4 faults at Lone Star target (Bonanza/ Nugget/ Eldorado/ Irish) appear to possibly connect to the Granville Fault at Gold Run.
- Implies some or all the extensional D4 faults run the 55km length of the property.

150 DD holes at NTW

*Drilled from 2015 - 2017



14,763.53 meters drilled

2018 SUMMER SEASON STRATEGY



2018 Objective: Determine if fault and structural system found at Lone Star extends throughout the property to Gold Run – 55km

2018 Budget \$2.5 M

1. Complete property wide detailed geologic mapping

- Ground magnetics
- Geophysical
- Geochemical
- Topography
- Trace element
- Rock origins

2. Economic viability studies

- Preparation for PEA
- Geochemistry of Au separation from host rock
- Rock type analysis

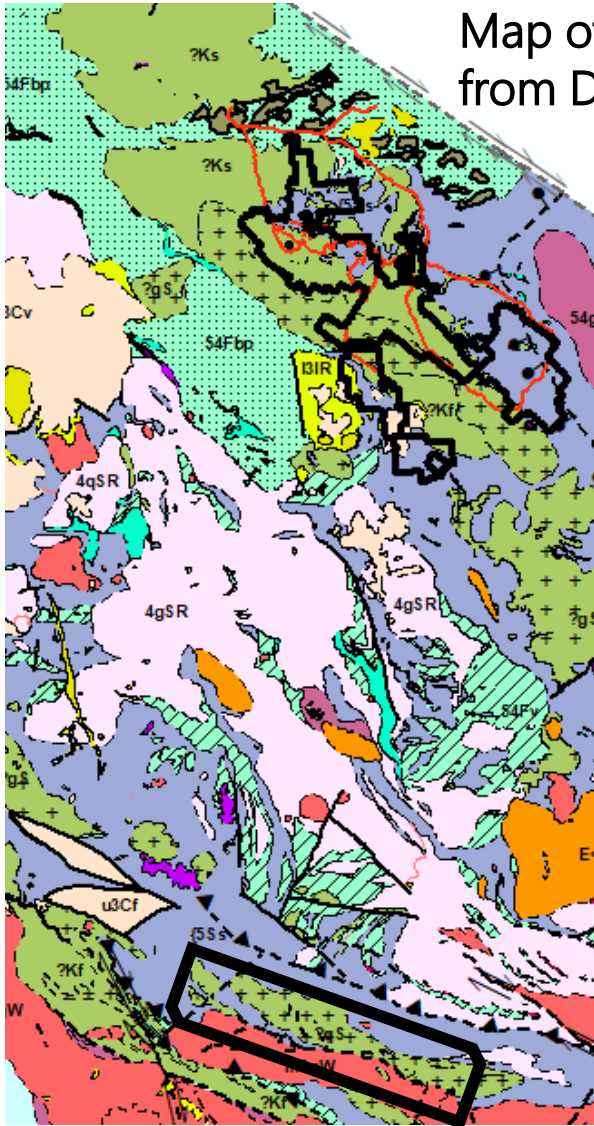
3. 50 – 70 hole DD program

- Gold Run
- Lone Star
- Nugget
- Gay Gulch
- Soil sampling
- Whole rock analysis

GEOLOGIC COMPARISON: KLONDIKE VS COFFEE



Map of Yukon regional geology from Dawson City to the Coffee deposit



Klondike Gold's Claims

120 km

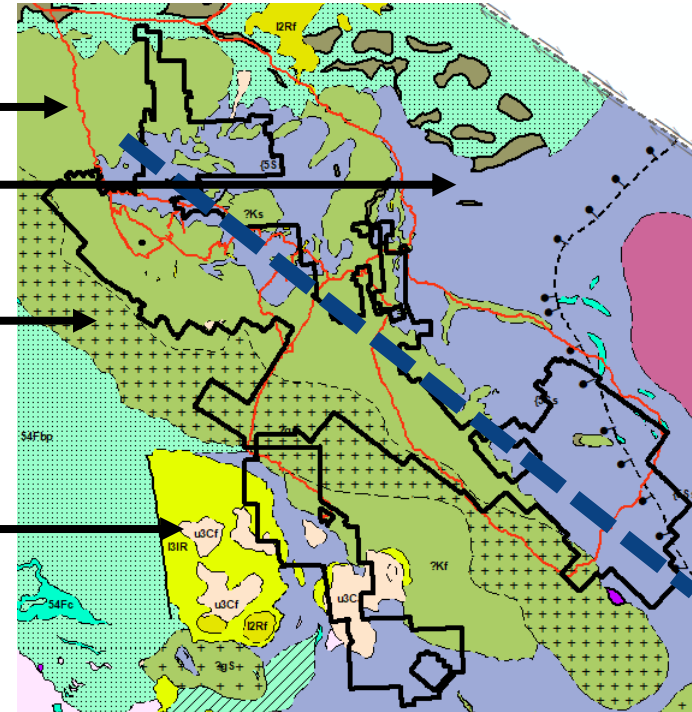
Kaminak - Goldcorp Coffee Deposit

"Klondike Schist"

"Snowcap Assemblage"

"Sulphur Creek orthogneiss"

"Cretaceous rhyolite"

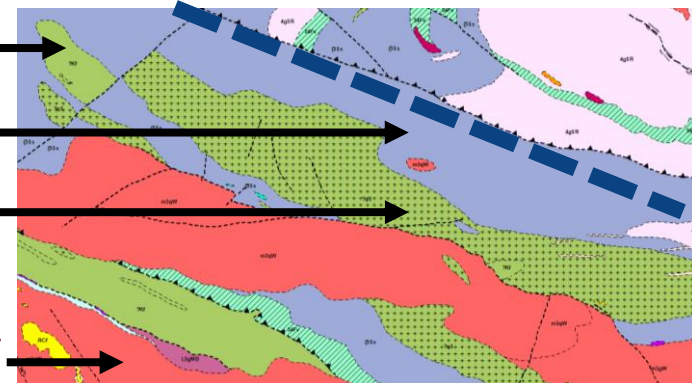


"Klondike Schist"

"Snowcap Assemblage"

"Sulphur Creek orthogneiss"

"Cretaceous granite"



Staking and first exploration

- ★ Q1 Coffee Technical Report NI 43-101
- ★ Q2 First metallurgical work

- ★ First Mineral Resource: 3.2 M oz at 1.56 g/t
- ★ Eira Thomas CEO
- ★ Initial PEA work begins

- ★ Q1 Mineral Resource Update
- ★ Q2 Initial PEA

- ★ **GOLDCORP**
- ★ Q1 Updates PEA
- ★ Goldcorp Takeover \$520M

Lone Star discovery

- ★ Peter Tallman CEO

First exploration



Comparison of KAM & KG	Kaminak (KAM)	Klondike Gold (KG)
Years In Operation	9 Years	3 Years
Meters Drilled (RC & DD)	280,000 meters	14,500 meters
Holes Drilled	1,682 DD & RC	150 DD
Exploration Expenses	\$136 M (\$CAD)	\$5 M (\$CAD)
Distance to Dawson	130 KM	20 KM

WHY INVEST IN KLONDIKE GOLD?



2018 drill test of Gold Run target



Potential bulk tonnage Au target(s) along 55km



Fully financed, ~60 hole 2018 drill program



Orogenic gold model sought after by majors



\$1 billion industry investment in Yukon in past 10 years

CONTACT US



2833 – 595 Burrard St.
Vancouver BC, V7X 1J1

www.klondikegoldcorp.com
info@klondikegoldcorp.com
(604) 559 4440

